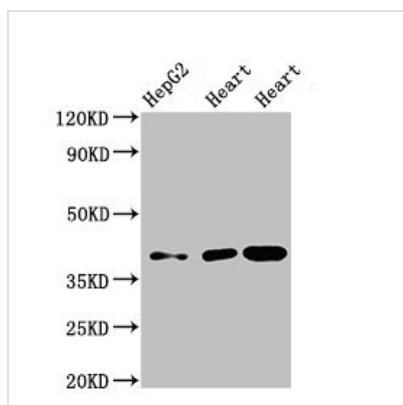




WISP3 Antibody

Product Code	CSB-PA026121LA01HU
Storage	Upon receipt, store at -20°C or -80°C. Avoid repeated freeze.
Uniprot No.	O95389
Immunogen	Recombinant Human WNT1-inducible-signaling pathway protein 3 protein (201-372AA)
Raised In	Rabbit
Species Reactivity	Human, Mouse, Rat
Tested Applications	ELISA, WB, IHC; Recommended dilution: WB:1:500-1:5000, IHC:1:20-1:200
Form	Liquid
Conjugate	Non-conjugated
Storage Buffer	Preservative: 0.03% Proclin 300 Constituents: 50% Glycerol, 0.01M PBS, pH 7.4
Purification Method	>95%, Protein G purified
Isotype	IgG
Clonality	Polyclonal
Alias	WNT1-inducible-signaling pathway protein 3 (WISP-3) (CCN family member 6), WISP3, CCN6
Immunogen Species	Homo sapiens (Human)
Research Area	Immunology
Target Names	WISP3

Image

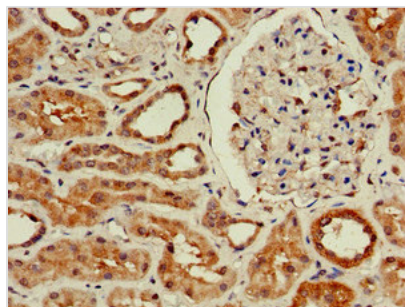


Western Blot

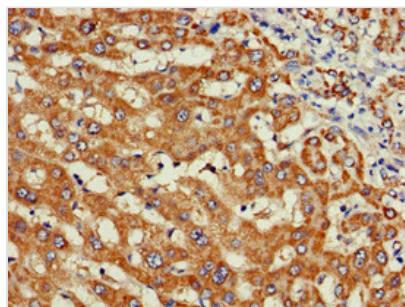
Positive WB detected in: HepG2 whole cell lysate, Rat heart tissue, Mouse heart tissue
All lanes: WISP3 antibody at 3.5µg/ml

Secondary

Goat polyclonal to rabbit IgG at 1/50000 dilution
Predicted band size: 40, 42 kDa
Observed band size: 40 kDa



Immunohistochemistry of paraffin-embedded human kidney tissue using CSB-PA026121LA01HU at dilution of 1:100



Immunohistochemistry of paraffin-embedded human liver cancer using CSB-PA026121LA01HU at dilution of 1:100

Usage

For Research Use Only. Not for use in diagnostic or therapeutic procedures.