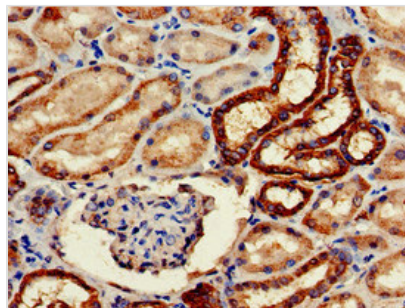




WWP2 Antibody

Product Code	CSB-PA026168LA01HU
Storage	Upon receipt, store at -20°C or -80°C. Avoid repeated freeze.
Uniprot No.	O00308
Immunogen	Recombinant Human NEDD4-like E3 ubiquitin-protein ligase WWP2 protein (145-367AA)
Raised In	Rabbit
Species Reactivity	Human
Tested Applications	ELISA, IHC; Recommended dilution: IHC:1:20-1:200
Form	Liquid
Conjugate	Non-conjugated
Storage Buffer	Preservative: 0.03% Proclin 300 Constituents: 50% Glycerol, 0.01M PBS, pH 7.4
Purification Method	>95%, Protein G purified
Isotype	IgG
Clonality	Polyclonal
Alias	NEDD4-like E3 ubiquitin-protein ligase WWP2 (EC 2.3.2.26) (Atrophin-1-interacting protein 2) (AIP2) (HECT-type E3 ubiquitin transferase WWP2) (WW domain-containing protein 2), WWP2
Immunogen Species	Homo sapiens (Human)
Research Area	Cell Biology
Target Names	WWP2

Image



Immunohistochemistry of paraffin-embedded human kidney tissue using CSB-PA026168LA01HU at dilution of 1:100

Usage

For Research Use Only. Not for use in diagnostic or therapeutic procedures.