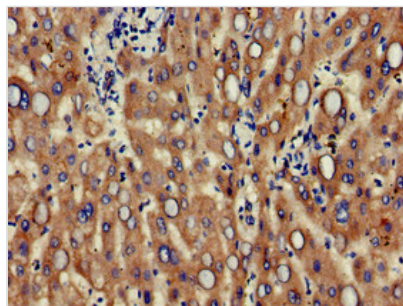




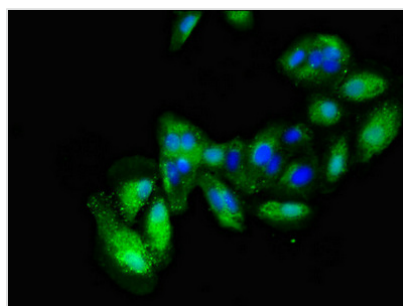
ALCAM Antibody

Product Code	CSB-PA10209A0Rb
Storage	Upon receipt, store at -20°C or -80°C. Avoid repeated freeze.
Uniprot No.	Q13740
Immunogen	Recombinant Human CD166 antigen protein (28-516AA)
Raised In	Rabbit
Species Reactivity	Human
Tested Applications	ELISA, IHC, IF; Recommended dilution: IHC:1:20-1:200, IF:1:50-1:200
Form	Liquid
Conjugate	Non-conjugated
Storage Buffer	Preservative: 0.03% Proclin 300 Constituents: 50% Glycerol, 0.01M PBS, pH 7.4
Purification Method	>95%, Protein G purified
Isotype	IgG
Clonality	Polyclonal
Alias	CD166 antigen (Activated leukocyte cell adhesion molecule) (CD antigen CD166), ALCAM, MEMD
Immunogen Species	Homo sapiens (Human)
Research Area	Immunology
Target Names	ALCAM

Image



Immunohistochemistry of paraffin-embedded human liver tissue using CSB-PA10209A0Rb at dilution of 1:100



Immunofluorescent analysis of HepG2 cells using CSB-PA10209A0Rb at dilution of 1:100 and Alexa Fluor 488-conjugated AffiniPure Goat Anti-Rabbit IgG(H+L)



Usage

For Research Use Only. Not for use in diagnostic or therapeutic procedures.