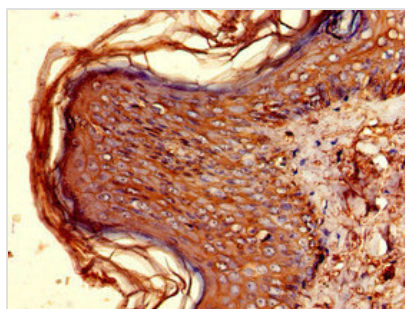




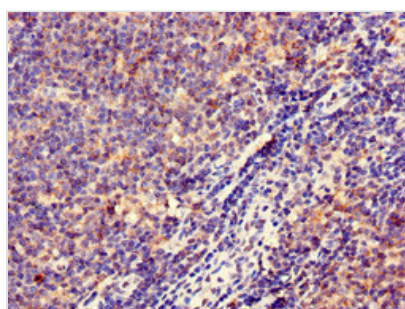
HLA-DQB1 Antibody

Product Code	CSB-PA14849A0Rb
Storage	Upon receipt, store at -20°C or -80°C. Avoid repeated freeze.
Uniprot No.	P01920
Immunogen	Recombinant Human HLA class II histocompatibility antigen, DQ beta 1 chain protein (128-175AA)
Raised In	Rabbit
Species Reactivity	Human, Mouse
Tested Applications	ELISA, WB, IHC; Recommended dilution: WB:1:200-1:3000, IHC:1:20-1:200
Form	Liquid
Conjugate	Non-conjugated
Storage Buffer	Preservative: 0.03% Proclin 300 Constituents: 50% Glycerol, 0.01M PBS, pH 7.4
Purification Method	>95%, Protein G purified
Isotype	IgG
Clonality	Polyclonal
Alias	HLA class II histocompatibility antigen, DQ beta 1 chain (MHC class II antigen DQB1), HLA-DQB1, HLA-DQB
Immunogen Species	Homo sapiens (Human)
Research Area	Immunology
Target Names	HLA-DQB1

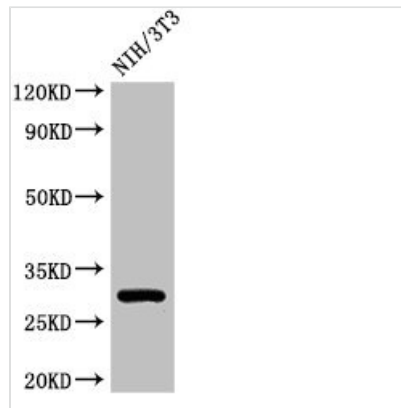
Image



Immunohistochemistry of paraffin-embedded human skin tissue using CSB-PA14849A0Rb at dilution of 1:100



Immunohistochemistry of paraffin-embedded human lymph node tissue using CSB-PA14849A0Rb at dilution of 1:100

**Western Blot**

Positive WB detected in: NIH/3T3 whole cell lysate

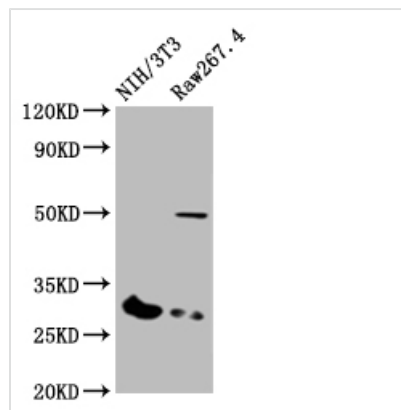
All lanes: HLA-DQB1 antibody at 3 μ g/ml

Secondary

Goat polyclonal to rabbit IgG at 1/50000 dilution

Predicted band size: 30 kDa

Observed band size: 30 kDa

**Western Blot**

Positive WB detected in: NIH/3T3 whole cell lysate, RAW264.7 whole cell lysate

All lanes: HLA-DQB1 antibody at 1:2000

Secondary

Goat polyclonal to rabbit IgG at 1/50000 dilution

Predicted band size: 30 kDa

Observed band size: 30 kDa

Usage

For Research Use Only. Not for use in diagnostic or therapeutic procedures.