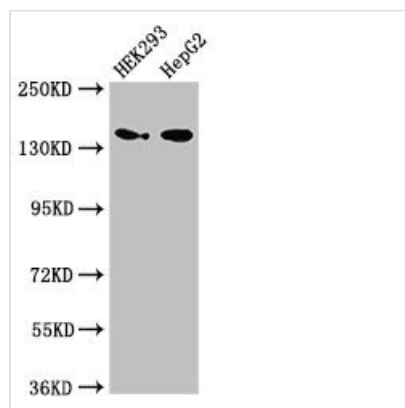




# MAN2A1 Antibody

<b>Product Code</b>	CSB-PA613697LA01HU
<b>Storage</b>	Upon receipt, store at -20°C or -80°C. Avoid repeated freeze.
<b>Uniprot No.</b>	Q16706
<b>Immunogen</b>	Recombinant Human Alpha-mannosidase 2 protein (31-181AA)
<b>Raised In</b>	Rabbit
<b>Species Reactivity</b>	Human
<b>Tested Applications</b>	ELISA, WB, IHC, IF; Recommended dilution: WB:1:500-1:5000, IHC:1:20-1:200, IF:1:50-1:200
<b>Form</b>	Liquid
<b>Conjugate</b>	Non-conjugated
<b>Storage Buffer</b>	Preservative: 0.03% Proclin 300 Constituents: 50% Glycerol, 0.01M PBS, pH 7.4
<b>Purification Method</b>	>95%, Protein G purified
<b>Isotype</b>	IgG
<b>Clonality</b>	Polyclonal
<b>Alias</b>	Alpha-mannosidase 2 (EC 3.2.1.114) (Golgi alpha-mannosidase II) (AMan II) (Man II) (Mannosidase alpha class 2A member 1) (Mannosyl-oligosaccharide 1,3-1,6-alpha-mannosidase), MAN2A1, MANA2
<b>Immunogen Species</b>	Homo sapiens (Human)
<b>Research Area</b>	Tags & Cell Markers
<b>Target Names</b>	MAN2A1

## Image



### Western Blot

Positive WB detected in: HEK293 whole cell lysate, HepG2 whole cell lysate

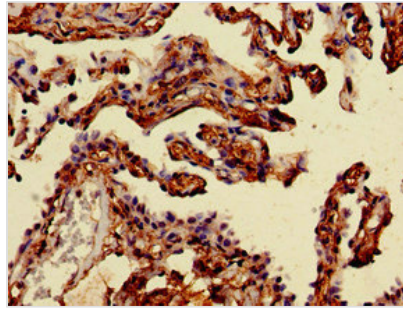
All lanes: MAN2A1 antibody at 3.5µg/ml

### Secondary

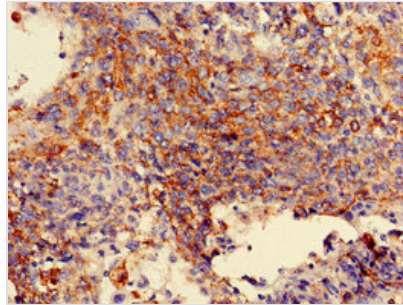
Goat polyclonal to rabbit IgG at 1/50000 dilution

Predicted band size: 132 kDa

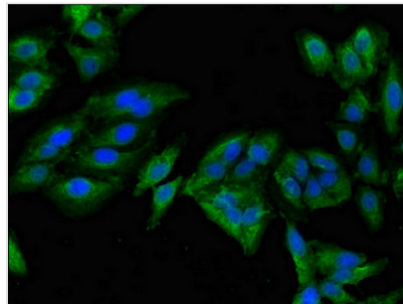
Observed band size: 150 kDa



Immunohistochemistry of paraffin-embedded human lung cancer using CSB-PA613697LA01HU at dilution of 1:100



Immunohistochemistry of paraffin-embedded human cervical cancer using CSB-PA613697LA01HU at dilution of 1:100



Immunofluorescent analysis of Hela cells using CSB-PA613697LA01HU at dilution of 1:100 and Alexa Fluor 488-conjugated AffiniPure Goat Anti-Rabbit IgG(H+L)