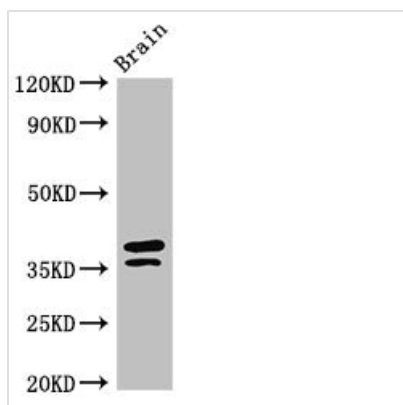




MAPRE2 Antibody

Product Code	CSB-PA618987LA01HU
Storage	Upon receipt, store at -20°C or -80°C. Avoid repeated freeze.
Uniprot No.	Q15555
Immunogen	Recombinant Human Microtubule-associated protein RP/EB family member 2 protein (159-240AA)
Raised In	Rabbit
Species Reactivity	Human, Mouse
Tested Applications	ELISA, WB, IF; Recommended dilution: WB:1:500-1:5000, IF:1:50-1:200
Form	Liquid
Conjugate	Non-conjugated
Storage Buffer	Preservative: 0.03% Proclin 300 Constituents: 50% Glycerol, 0.01M PBS, pH 7.4
Purification Method	>95%, Protein G purified
Isotype	IgG
Clonality	Polyclonal
Alias	Microtubule-associated protein RP/EB family member 2 (APC-binding protein EB2) (End-binding protein 2) (EB2), MAPRE2, RP1
Immunogen Species	Homo sapiens (Human)
Research Area	Cell Biology
Target Names	MAPRE2

Image



Western Blot

Positive WB detected in: Mouse brain tissue

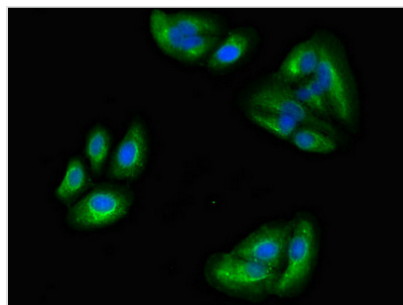
All lanes: MAPRE2 antibody at 3µg/ml

Secondary

Goat polyclonal to rabbit IgG at 1/50000 dilution

Predicted band size: 38, 30, 36, 33, 31 kDa

Observed band size: 38, 36 kDa



Immunofluorescent analysis of HepG2 cells using CSB-PA618987LA01HU at dilution of 1:100 and Alexa Fluor 488-conjugated AffiniPure Goat Anti-Rabbit IgG(H+L)

Usage

For Research Use Only. Not for use in diagnostic or therapeutic procedures.