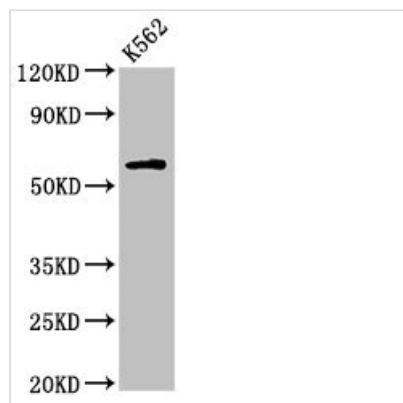




IL10RA Antibody

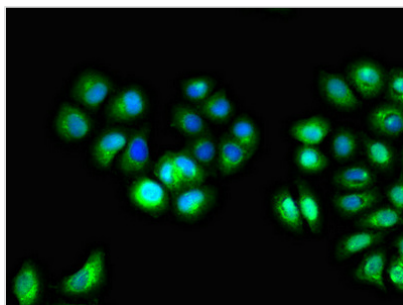
Product Code	CSB-PA621688EA01HU
Storage	Upon receipt, store at -20°C or -80°C. Avoid repeated freeze.
Uniprot No.	Q13651
Immunogen	Recombinant Human Interleukin-10 receptor subunit alpha protein (22-235AA)
Raised In	Rabbit
Species Reactivity	Human
Tested Applications	ELISA, WB, IF; Recommended dilution: WB:1:500-1:5000, IF:1:50-1:200
Form	Liquid
Conjugate	Non-conjugated
Storage Buffer	Preservative: 0.03% Proclin 300 Constituents: 50% Glycerol, 0.01M PBS, pH 7.4
Purification Method	>95%, Protein G purified
Isotype	IgG
Clonality	Polyclonal
Alias	Interleukin-10 receptor subunit alpha (IL-10 receptor subunit alpha) (IL-10R subunit alpha) (IL-10RA) (CDw210a) (Interleukin-10 receptor subunit 1) (IL-10R subunit 1) (IL-10R1) (CD antigen CD210), IL10RA, IL10R
Immunogen Species	Homo sapiens (Human)
Research Area	Immunology
Target Names	IL10RA

Image



Western Blot

Positive WB detected in: K562 whole cell lysate
 All lanes: IL10RA antibody at 2.7µg/ml
 Secondary
 Goat polyclonal to rabbit IgG at 1/50000 dilution
 Predicted band size: 64 kDa
 Observed band size: 64 kDa



Immunofluorescent analysis of A549 cells using CSB-PA621688EA01HU at dilution of 1:100 and Alexa Fluor 488-conjugated AffiniPure Goat Anti-Rabbit IgG(H+L)

Usage

For Research Use Only. Not for use in diagnostic or therapeutic procedures.