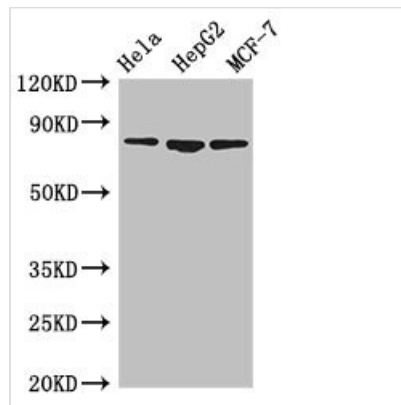




# IMMT Antibody

<b>Product Code</b>	CSB-PA623101LA01HU
<b>Storage</b>	Upon receipt, store at -20°C or -80°C. Avoid repeated freeze.
<b>Uniprot No.</b>	Q16891
<b>Immunogen</b>	Recombinant Human MICOS complex subunit MIC60 protein (76-215AA)
<b>Raised In</b>	Rabbit
<b>Species Reactivity</b>	Human
<b>Tested Applications</b>	ELISA, WB, IHC, IF, IP; Recommended dilution: WB:1:500-1:5000, IHC:1:20-1:200, IF:1:50-1:200, IP:1:200-1:2000
<b>Form</b>	Liquid
<b>Conjugate</b>	Non-conjugated
<b>Storage Buffer</b>	Preservative: 0.03% Proclin 300 Constituents: 50% Glycerol, 0.01M PBS, pH 7.4
<b>Purification Method</b>	>95%, Protein G purified
<b>Isotype</b>	IgG
<b>Clonality</b>	Polyclonal
<b>Alias</b>	MICOS complex subunit MIC60 (Cell proliferation-inducing gene 4/52 protein) (Mitochondrial inner membrane protein) (Mitofilin) (p87/89), IMMT, HMP MIC60 MINOS2
<b>Immunogen Species</b>	Homo sapiens (Human)
<b>Research Area</b>	Signal Transduction
<b>Target Names</b>	IMMT

## Image



### Western Blot

Positive WB detected in: HeLa whole cell lysate, HepG2 whole cell lysate, MCF-7 whole cell lysate

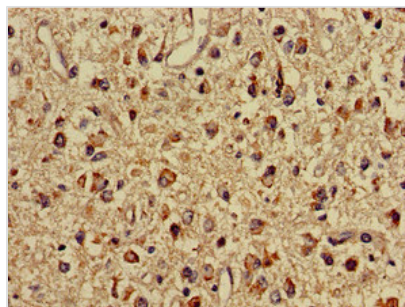
All lanes: IMMT antibody at 3.5µg/ml

Secondary

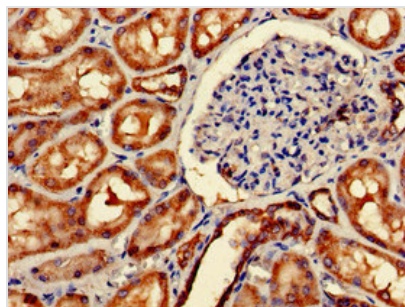
Goat polyclonal to rabbit IgG at 1/50000 dilution

Predicted band size: 84, 83, 81 kDa

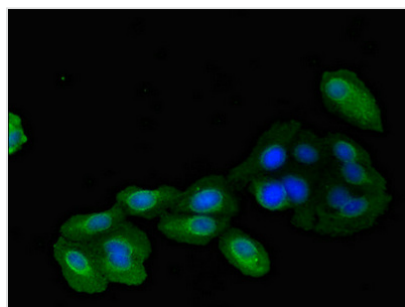
Observed band size: 84 kDa



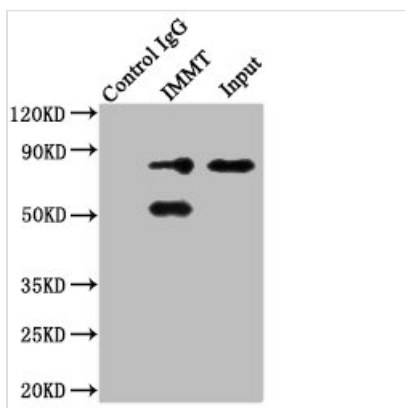
Immunohistochemistry of paraffin-embedded human glioma using CSB-PA623101LA01HU at dilution of 1:100



Immunohistochemistry of paraffin-embedded human kidney tissue using CSB-PA623101LA01HU at dilution of 1:100



Immunofluorescent analysis of HepG2 cells using CSB-PA623101LA01HU at dilution of 1:100 and Alexa Fluor 488-conjugated AffiniPure Goat Anti-Rabbit IgG(H+L)



Immunoprecipitating IMMT in HepG2 whole cell lysate

Lane 1: Rabbit control IgG instead of CSB-PA623101LA01HU in HepG2 whole cell lysate. For western blotting, a HRP-conjugated Protein G antibody was used as the secondary antibody (1/2000)

Lane 2: CSB-PA623101LA01HU (8μg) + HepG2 whole cell lysate (500μg)

Lane 3: HepG2 whole cell lysate (10μg)

**Usage**

For Research Use Only. Not for use in diagnostic or therapeutic procedures.