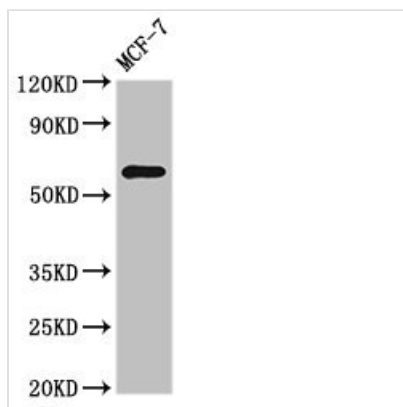




NR1D2 Antibody

Product Code	CSB-PA623948LA01HU
Storage	Upon receipt, store at -20°C or -80°C. Avoid repeated freeze.
Uniprot No.	Q6NSM0
Immunogen	Recombinant Human NR1D2 protein (14-318AA)
Raised In	Rabbit
Species Reactivity	Human
Tested Applications	ELISA, WB; Recommended dilution: WB:1:500-1:5000
Form	Liquid
Conjugate	Non-conjugated
Storage Buffer	Preservative: 0.03% Proclin 300 Constituents: 50% Glycerol, 0.01M PBS, pH 7.4
Purification Method	>95%, Protein G purified
Isotype	IgG
Clonality	Polyclonal
Alias	Nuclear receptor subfamily 1 group D member 2 (Orphan nuclear hormone receptor BD73) (Rev-erb alpha-related receptor) (RVR) (Rev-erb-beta) (V-erbA-related protein 1-related) (EAR-1R), NR1D2
Immunogen Species	Homo sapiens (Human)
Research Area	Epigenetics and Nuclear Signaling
Target Names	NR1D2

Image



Western Blot

Positive WB detected in: MCF-7 whole cell lysate

All lanes: NR1D2 antibody at 3µg/ml

Secondary

Goat polyclonal to rabbit IgG at 1/50000 dilution

Predicted band size: 65 kDa

Observed band size: 65 kDa

Usage

For Research Use Only. Not for use in diagnostic or therapeutic procedures.