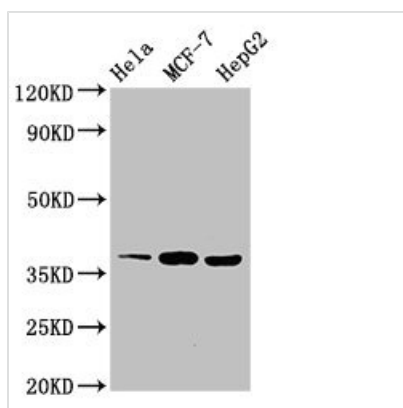




ALX1 Antibody

| | |
|----------------------------|--|
| Product Code | CSB-PA624031LA01HU |
| Storage | Upon receipt, store at -20°C or -80°C. Avoid repeated freeze. |
| Uniprot No. | Q15699 |
| Immunogen | Recombinant Human ALX homeobox protein 1 protein (10-304AA) |
| Raised In | Rabbit |
| Species Reactivity | Human |
| Tested Applications | ELISA, WB, IHC; Recommended dilution: WB:1:500-1:5000, IHC:1:20-1:200 |
| Form | Liquid |
| Conjugate | Non-conjugated |
| Storage Buffer | Preservative: 0.03% Proclin 300 Constituents: 50% Glycerol, 0.01M PBS, pH 7.4 |
| Purification Method | >95%, Protein G purified |
| Isotype | IgG |
| Clonality | Polyclonal |
| Alias | ALX homeobox protein 1 (Cartilage homeoprotein 1) (CART-1), ALX1, CART1 |
| Immunogen Species | Homo sapiens (Human) |
| Research Area | Epigenetics and Nuclear Signaling |
| Target Names | ALX1 |

Image



Western Blot

Positive WB detected in: HeLa whole cell lysate, MCF-7 whole cell lysate, HepG2 whole cell lysate

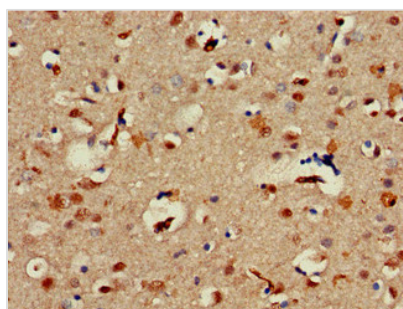
All lanes: ALX1 antibody at 3µg/ml

Secondary

Goat polyclonal to rabbit IgG at 1/50000 dilution

Predicted band size: 37 kDa

Observed band size: 37 kDa



Immunohistochemistry of paraffin-embedded human brain tissue using CSB-PA624031LA01HU at dilution of 1:100



Usage

For Research Use Only. Not for use in diagnostic or therapeutic procedures.