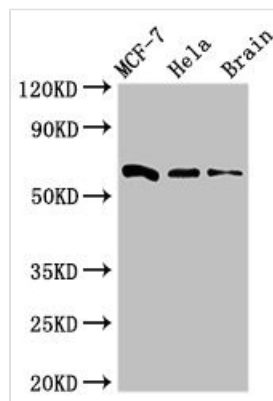




SGO1 Antibody

Product Code	CSB-PA688764LA01HU
Storage	Upon receipt, store at -20°C or -80°C. Avoid repeated freeze.
Uniprot No.	Q5FBB7
Immunogen	Recombinant Human Shugoshin 1 protein (260-439AA)
Raised In	Rabbit
Species Reactivity	Human, Mouse, Rat
Tested Applications	ELISA, WB, IF; Recommended dilution: WB:1:500-1:5000, IF:1:50-1:200
Form	Liquid
Conjugate	Non-conjugated
Storage Buffer	Preservative: 0.03% Proclin 300 Constituents: 50% Glycerol, 0.01M PBS, pH 7.4
Purification Method	>95%, Protein G purified
Isotype	IgG
Clonality	Polyclonal
Alias	Shugoshin 1 (Serologically defined breast cancer antigen NY-BR-85) (Shugoshin-like 1), SGO1, SGOL1
Immunogen Species	Homo sapiens (Human)
Research Area	Epigenetics and Nuclear Signaling
Target Names	SGO1

Image



Western Blot

Positive WB detected in: MCF-7 whole cell lysate, HeLa whole cell lysate, Mouse brain tissue

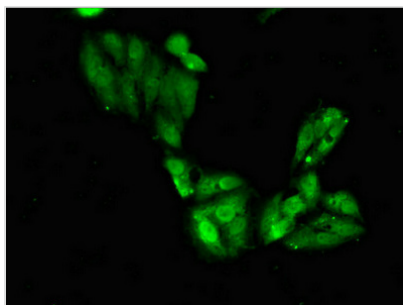
All lanes: SGO1 antibody at 3µg/ml

Secondary

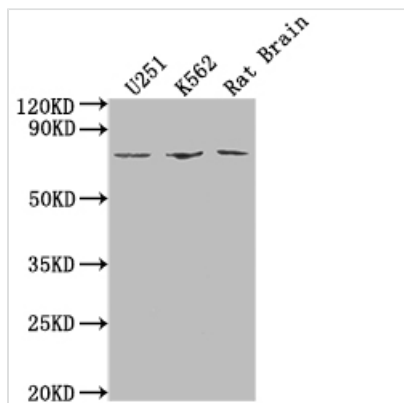
Goat polyclonal to rabbit IgG at 1/50000 dilution

Predicted band size: 65, 36, 34, 32, 30, 61, 25 kDa

Observed band size: 65 kDa



Immunofluorescent analysis of HeLa cells using CSB-PA688764LA01HU at dilution of 1:100 and Alexa Fluor 488-conjugated AffiniPure Goat Anti-Rabbit IgG(H+L)

**Western Blot**

Positive WB detected in: U251 whole cell lysate, K562 whole cell lysate, Rat Brain tissue

All lanes: SGO1 antibody at 1:2000

Secondary

Goat polyclonal to rabbit IgG at 1/50000 dilution

Predicted band size: 65, 36, 34, 32, 30, 61, 25 kDa

Observed band size: 65 kDa

Usage

For Research Use Only. Not for use in diagnostic or therapeutic procedures.