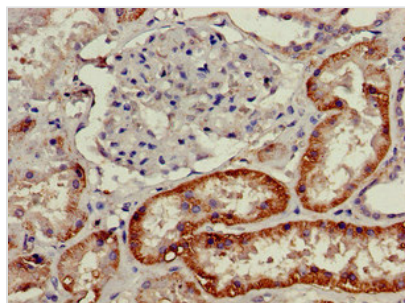




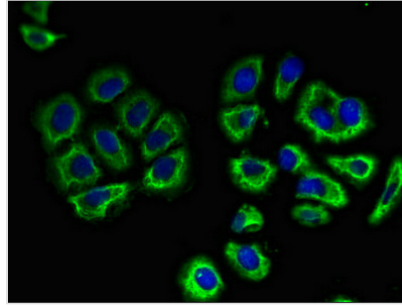
SLC3A1 Antibody

Product Code	CSB-PA737352LA01HU
Storage	Upon receipt, store at -20°C or -80°C. Avoid repeated freeze.
Uniprot No.	Q07837
Immunogen	Recombinant Human Neutral and basic amino acid transport protein rBAT protein (1-68AA)
Raised In	Rabbit
Species Reactivity	Human, Mouse, Rat
Tested Applications	ELISA, WB, IHC, IF; Recommended dilution: WB:1:200-1:5000, IHC:1:20-1:200, IF:1:50-1:200
Form	Liquid
Conjugate	Non-conjugated
Storage Buffer	Preservative: 0.03% Proclin 300 Constituents: 50% Glycerol, 0.01M PBS, pH 7.4
Purification Method	>95%, Protein G purified
Isotype	IgG
Clonality	Polyclonal
Alias	Neutral and basic amino acid transport protein rBAT (NBAT) (D2h) (Solute carrier family 3 member 1) (b(0,+)-type amino acid transport protein), SLC3A1, RBAT
Immunogen Species	Homo sapiens (Human)
Research Area	Others
Target Names	SLC3A1

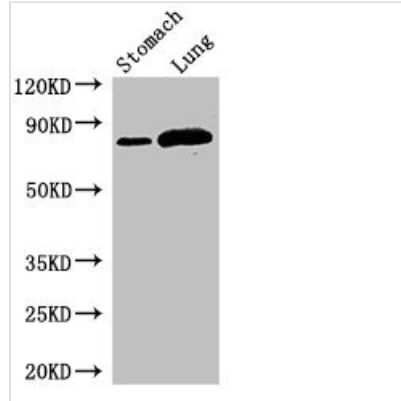
Image



Immunohistochemistry of paraffin-embedded human kidney tissue using CSB-PA737352LA01HU at dilution of 1:100



Immunofluorescent analysis of A549 cells using CSB-PA737352LA01HU at dilution of 1:100 and Alexa Fluor 488-conjugated AffiniPure Goat Anti-Rabbit IgG(H+L)

**Western Blot**

Positive WB detected in: Mouse stomach tissue, Rat lung tissue

All lanes: SLC3A1 antibody at 2.8µg/ml
Secondary

Goat polyclonal to rabbit IgG at 1/50000 dilution
Predicted band size: 79, 47, 46, 36, 58, 67, 64 kDa

Observed band size: 79 kDa

Usage

For Research Use Only. Not for use in diagnostic or therapeutic procedures.