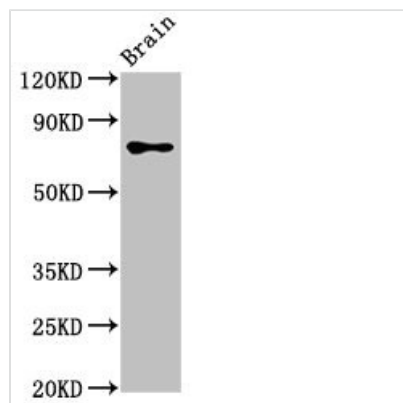




CASC1 Antibody

Product Code	CSB-PA754371LA01HU
Storage	Upon receipt, store at -20°C or -80°C. Avoid repeated freeze.
Uniprot No.	Q6TDU7
Immunogen	Recombinant Human Protein CASC1 protein (1-300AA)
Raised In	Rabbit
Species Reactivity	Human, Rat
Tested Applications	ELISA, WB, IHC; Recommended dilution: WB:1:500-1:5000, IHC:1:20-1:200
Form	Liquid
Conjugate	Non-conjugated
Storage Buffer	Preservative: 0.03% Proclin 300 Constituents: 50% Glycerol, 0.01M PBS, pH 7.4
Purification Method	>95%, Protein G purified
Isotype	IgG
Clonality	Polyclonal
Alias	Protein CASC1 (Cancer susceptibility candidate gene 1 protein) (Lung adenoma susceptibility 1-like protein) (Protein phosphatase 1 regulatory subunit 54), CASC1, LAS1 PPP1R54
Immunogen Species	Homo sapiens (Human)
Research Area	Cell Biology
Target Names	CASC1

Image



Western Blot

Positive WB detected in: Rat brain tissue

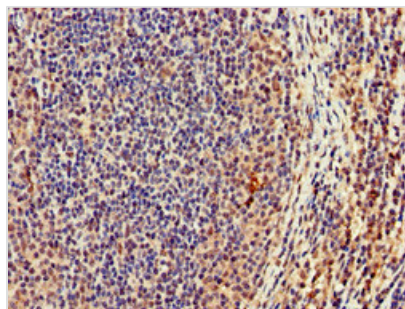
All lanes: CASC1 antibody at 3.4µg/ml

Secondary

Goat polyclonal to rabbit IgG at 1/50000 dilution

Predicted band size: 84, 79, 82, 76 kDa

Observed band size: 84 kDa



Immunohistochemistry of paraffin-embedded human lymph node tissue using CSB-PA754371LA01HU at dilution of 1:100