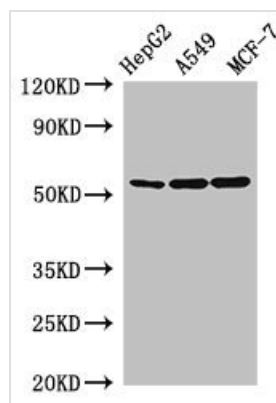




# SLC24A5 Antibody

<b>Product Code</b>	CSB-PA754654LA01HU
<b>Storage</b>	Upon receipt, store at -20°C or -80°C. Avoid repeated freeze.
<b>Uniprot No.</b>	Q71RS6
<b>Immunogen</b>	Recombinant Human Sodium/potassium/calcium exchanger 5 protein (240-298AA)
<b>Raised In</b>	Rabbit
<b>Species Reactivity</b>	Human
<b>Tested Applications</b>	ELISA, WB; Recommended dilution: WB:1:500-1:5000
<b>Form</b>	Liquid
<b>Conjugate</b>	Non-conjugated
<b>Storage Buffer</b>	Preservative: 0.03% Proclin 300 Constituents: 50% Glycerol, 0.01M PBS, pH 7.4
<b>Purification Method</b>	>95%, Protein G purified
<b>Isotype</b>	IgG
<b>Clonality</b>	Polyclonal
<b>Alias</b>	Sodium/potassium/calcium exchanger 5 (Na(+)/K(+)/Ca(2+)-exchange protein 5) (Solute carrier family 24 member 5), SLC24A5, JSX NCKX5
<b>Immunogen Species</b>	Homo sapiens (Human)
<b>Research Area</b>	Signal Transduction
<b>Target Names</b>	SLC24A5

## Image



### Western Blot

Positive WB detected in: HepG2 whole cell lysate, A549 whole cell lysate, MCF-7 whole cell lysate

All lanes: SLC24A5 antibody at 2.5µg/ml

Secondary

Goat polyclonal to rabbit IgG at 1/50000 dilution

Predicted band size: 55, 49 kDa

Observed band size: 55 kDa