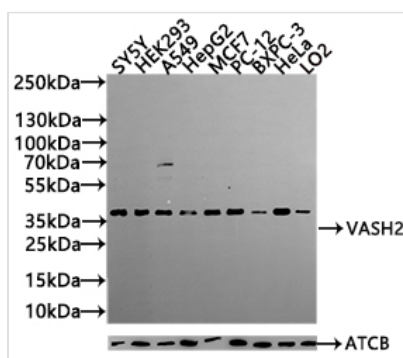




VASH2 Antibody

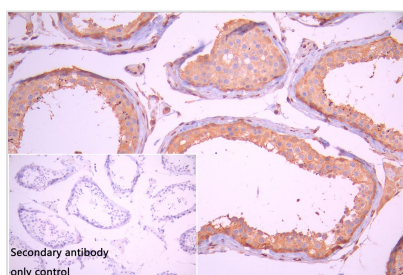
Product Code	CSB-PA769783LA01HU
Storage	Upon receipt, store at -20°C or -80°C. Avoid repeated freeze.
Uniprot No.	Q86V25
Immunogen	Synthesized peptide derived from human VASH2
Raised In	Rabbit
Species Reactivity	Human,Rat
Tested Applications	ELISA, WB, IHC; Recommended dilution: WB:1:500-1:2000, IHC:1:50-1:300
Form	Liquid
Storage Buffer	Liquid in PBS containing 50% glycerol, 0.5% BSA and 0.02% sodium azide.
Purification Method	Antigen affinity purification
Isotype	IgG
Clonality	Polyclonal
Product Type	Polyclonal Antibody
Immunogen Species	Homo sapiens (Human)
Research Area	Cardiovascular
Target Names	VASH2

Image



Western Blot

Positive WB detected in: SY5Y whole cell lysate(30µg), HEK293 whole cell lysate(30µg), A549 whole cell lysate(30µg), HepG2 whole cell lysate(30µg), MCF7 whole cell lysate(30µg), PC-12 whole cell lysate(30µg),BXP-3 whole cell lysate(30µg),HeLa whole cell lysate(30µg),LO2 whole cell lysate(30µg)
 All lanes: VASH2 antibody at 1:1000
 Secondary
 Goat polyclonal to rabbit IgG at 1/40000 dilution
 Predicted band size: 41,34,19,36,30 kDa
 Observed band size: 41 kDa
 Exposure time: 120s



IHC image of CSB-PA769783LA01HU diluted at 1:100 and staining in paraffin-embedded human testis tissue performed on a Leica Bond™ system. After dewaxing and hydration, antigen retrieval was mediated by high pressure in a citrate buffer (pH 6.0). Section was blocked with 10% normal goat serum 30min at RT. Then primary antibody (1% BSA) was incubated at 4°C overnight. The primary is detected by a Goat anti-rabbit polymer IgG labeled by HRP and visualized using 0.05% DAB. Secondary



antibody only control: uses 1% BSA instead of primary antibody

Usage

For Research Use Only. Not for use in diagnostic or therapeutic procedures.