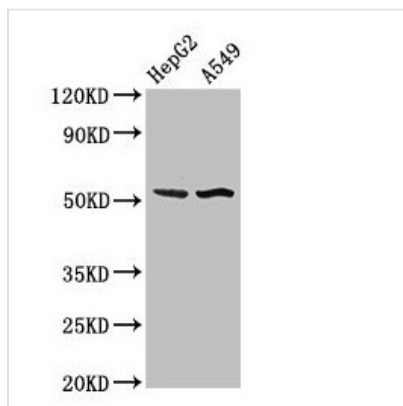




SPRED1 Antibody

Product Code	CSB-PA773600LA01HU
Storage	Upon receipt, store at -20°C or -80°C. Avoid repeated freeze.
Uniprot No.	Q7Z699
Immunogen	Recombinant Human Sprouty-related, EVH1 domain-containing protein 1 protein (123-311AA)
Raised In	Rabbit
Species Reactivity	Human
Tested Applications	ELISA, WB, IHC, IF; Recommended dilution: WB:1:500-1:5000, IHC:1:20-1:200, IF:1:50-1:200
Form	Liquid
Conjugate	Non-conjugated
Storage Buffer	Preservative: 0.03% Proclin 300 Constituents: 50% Glycerol, 0.01M PBS, pH 7.4
Purification Method	>95%, Protein G purified
Isotype	IgG
Clonality	Polyclonal
Alias	Sprouty-related, EVH1 domain-containing protein 1 (Spred-1) (hSpred1), SPRED1
Immunogen Species	Homo sapiens (Human)
Research Area	Signal Transduction
Target Names	SPRED1

Image



Western Blot

Positive WB detected in: HepG2 whole cell lysate, A549 whole cell lysate

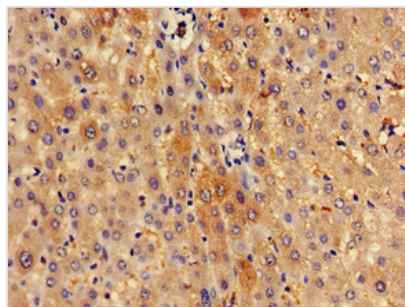
All lanes: SPRED1 antibody at 3µg/ml

Secondary

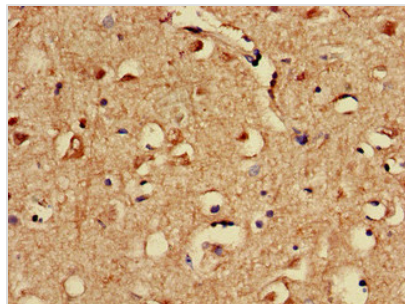
Goat polyclonal to rabbit IgG at 1/50000 dilution

Predicted band size: 51 kDa

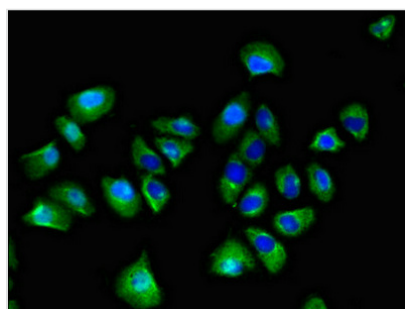
Observed band size: 51 kDa



Immunohistochemistry of paraffin-embedded human liver tissue using CSB-PA773600LA01HU at dilution of 1:100



Immunohistochemistry of paraffin-embedded human brain tissue using CSB-PA773600LA01HU at dilution of 1:100



Immunofluorescent analysis of A549 cells using CSB-PA773600LA01HU at dilution of 1:100 and Alexa Fluor 488-conjugated AffiniPure Goat Anti-Rabbit IgG(H+L)

Usage

For Research Use Only. Not for use in diagnostic or therapeutic procedures.