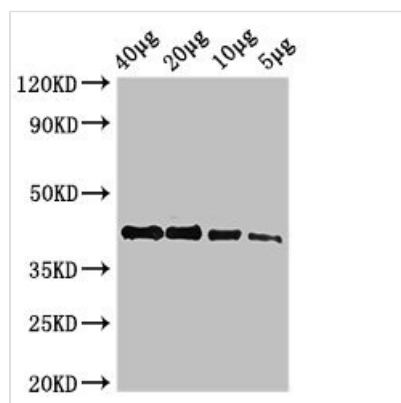




actba Antibody

| | |
|----------------------------|--|
| Product Code | CSB-PA800252LA01DIL |
| Storage | Upon receipt, store at -20°C or -80°C. Avoid repeated freeze. |
| Uniprot No. | Q7ZVI7 |
| Immunogen | Recombinant Zebrafish Actin, cytoplasmic 1 protein (2-375AA) |
| Raised In | Rabbit |
| Species Reactivity | Zebrafish |
| Tested Applications | ELISA, WB; Recommended dilution: WB:1:500-1:5000 |
| Form | Liquid |
| Conjugate | Non-conjugated |
| Storage Buffer | Preservative: 0.03% Proclin 300 Constituents: 50% Glycerol, 0.01M PBS, pH 7.4 |
| Purification Method | >95%, Protein G purified |
| Isotype | IgG |
| Clonality | Polyclonal |
| Alias | Actin, cytoplasmic 1 (Beta-actin-1) [Cleaved into: Actin, cytoplasmic 1, N-terminally processed], actba, bact bactin1 bactzf |
| Immunogen Species | Zebrafish |
| Research Area | Tags & Cell Markers |
| Target Names | actba |

Image



Western Blot

Positive WB detected in: Zebrafish tissue 40µg, 20µg, 10µg, 5µg

All lanes: actba antibody at 2.7µg/ml

Secondary

Goat polyclonal to rabbit IgG at 1/50000 dilution

Predicted band size: 42 kDa

Observed band size: 42 kDa

Usage

For Research Use Only. Not for use in diagnostic or therapeutic procedures.