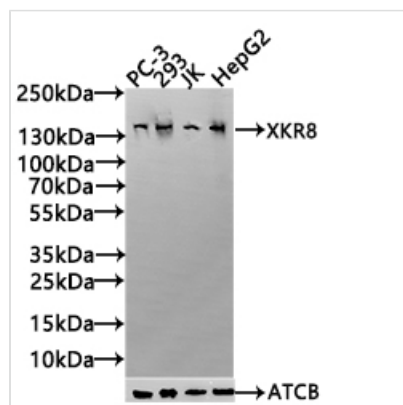




# PLIN4 Antibody

<b>Product Code</b>	CSB-PA822286HA01HU
<b>Storage</b>	Upon receipt, store at -20°C or -80°C. Avoid repeated freeze.
<b>Uniprot No.</b>	Q96Q06
<b>Immunogen</b>	Synthesized peptide derived from human PLIN4
<b>Raised In</b>	Rabbit
<b>Species Reactivity</b>	Human
<b>Tested Applications</b>	ELISA, WB; Recommended dilution: WB:1:500-1:2000
<b>Form</b>	Liquid
<b>Storage Buffer</b>	Liquid in PBS containing 50% glycerol, 0.5% BSA and 0.02% sodium azide.
<b>Purification Method</b>	Antigen affinity purification
<b>Isotype</b>	IgG
<b>Clonality</b>	Polyclonal
<b>Product Type</b>	Polyclonal Antibody
<b>Immunogen Species</b>	Homo sapiens (Human)
<b>Research Area</b>	Cardiovascular
<b>Target Names</b>	PLIN4

## Image



### Western Blot

Positive WB detected in: PC-3 whole cell lysate(30µg), 293 whole cell lysate(30µg), JK whole cell lysate(30µg), HepG2 whole cell lysate(30µg)

All lanes: PLIN4 antibody at 1:1000

Secondary

Goat polyclonal to rabbit IgG at 1/40000 dilution

Predicted band size: 135,141 kDa

Observed band size: 141 kDa

Exposure time: 120s

## Usage

For Research Use Only. Not for use in diagnostic or therapeutic procedures.