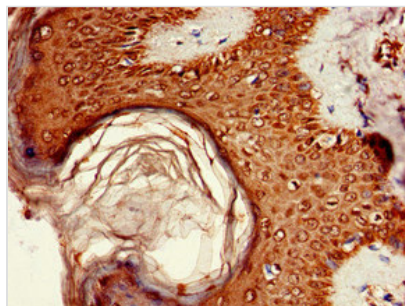




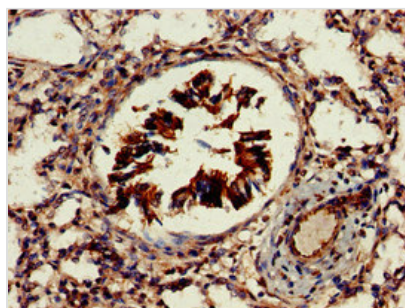
# AKT1S1 Antibody

<b>Product Code</b>	CSB-PA836185LA01HU
<b>Storage</b>	Upon receipt, store at -20°C or -80°C. Avoid repeated freeze.
<b>Uniprot No.</b>	Q96B36
<b>Immunogen</b>	Recombinant Human Proline-rich AKT1 substrate 1 protein (52-101AA)
<b>Raised In</b>	Rabbit
<b>Species Reactivity</b>	Human, Rat
<b>Tested Applications</b>	ELISA, WB, IHC; Recommended dilution: WB:1:200-1:3000, IHC:1:20-1:200
<b>Form</b>	Liquid
<b>Conjugate</b>	Non-conjugated
<b>Storage Buffer</b>	Preservative: 0.03% Proclin 300 Constituents: 50% Glycerol, 0.01M PBS, pH 7.4
<b>Purification Method</b>	>95%, Protein G purified
<b>Isotype</b>	IgG
<b>Clonality</b>	Polyclonal
<b>Alias</b>	Proline-rich AKT1 substrate 1 (40 kDa proline-rich AKT substrate), AKT1S1, PRAS40
<b>Immunogen Species</b>	Homo sapiens (Human)
<b>Research Area</b>	Cell Biology
<b>Target Names</b>	AKT1S1

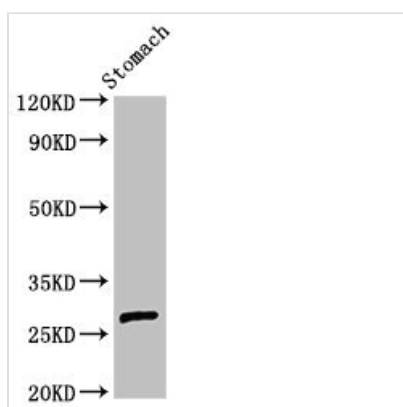
## Image



Immunohistochemistry of paraffin-embedded human skin tissue using CSB-PA836185LA01HU at dilution of 1:100



Immunohistochemistry of paraffin-embedded human lung tissue using CSB-PA836185LA01HU at dilution of 1:100



#### Western Blot

Positive WB detected in: Rat stomach tissue

All lanes: AKT1S1 antibody at 3 $\mu$ g/ml

Secondary

Goat polyclonal to rabbit IgG at 1/50000 dilution

Predicted band size: 28, 14, 30 kDa

Observed band size: 28 kDa