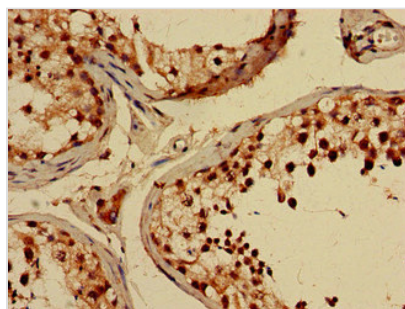




CREB3L4 Antibody

Product Code	CSB-PA844735LA01HU
Storage	Upon receipt, store at -20°C or -80°C. Avoid repeated freeze.
Uniprot No.	Q8TEY5
Immunogen	Recombinant Human Cyclic AMP-responsive element-binding protein 3-like protein 4 protein (13-133AA)
Raised In	Rabbit
Species Reactivity	Human
Tested Applications	ELISA, IHC; Recommended dilution: IHC:1:20-1:200
Form	Liquid
Conjugate	Non-conjugated
Storage Buffer	Preservative: 0.03% Proclin 300 Constituents: 50% Glycerol, 0.01M PBS, pH 7.4
Purification Method	>95%, Protein G purified
Isotype	IgG
Clonality	Polyclonal
Alias	Cyclic AMP-responsive element-binding protein 3-like protein 4 (cAMP-responsive element-binding protein 3-like protein 4) (Androgen-induced basic leucine zipper protein) (AlbZIP) (Attaching to CRE-like 1) (ATCE1) (Cyclic AMP-responsive element-binding protein 4) (CREB-4) (cAMP-responsive element-binding protein 4) (Transcript induced in spermiogenesis protein 40) (Tisp40) (hJAL) [Cleaved into: Processed cyclic AMP-responsive element-binding protein 3-like protein 4], CREB3L4, AIBZIP CREB4 JAL
Immunogen Species	Homo sapiens (Human)
Research Area	Epigenetics and Nuclear Signaling
Target Names	CREB3L4

Image



Immunohistochemistry of paraffin-embedded human testis tissue using CSB-PA844735LA01HU at dilution of 1:100

Usage

For Research Use Only. Not for use in diagnostic or therapeutic procedures.