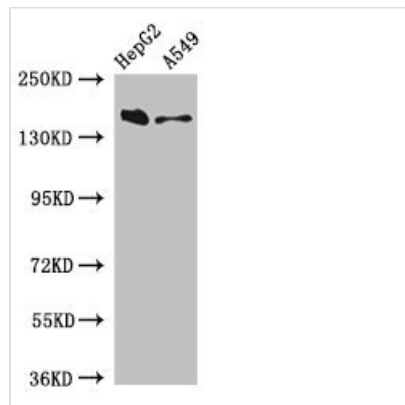




# DOT1L Antibody

<b>Product Code</b>	CSB-PA848418LA01HU
<b>Storage</b>	Upon receipt, store at -20°C or -80°C. Avoid repeated freeze.
<b>Uniprot No.</b>	Q8TEK3
<b>Immunogen</b>	Recombinant Human Histone-lysine N-methyltransferase, H3 lysine-79 specific protein (331-484AA)
<b>Raised In</b>	Rabbit
<b>Species Reactivity</b>	Human
<b>Tested Applications</b>	ELISA, WB, IHC; Recommended dilution: WB:1:500-1:5000, IHC:1:20-1:200
<b>Form</b>	Liquid
<b>Conjugate</b>	Non-conjugated
<b>Storage Buffer</b>	Preservative: 0.03% Proclin 300 Constituents: 50% Glycerol, 0.01M PBS, pH 7.4
<b>Purification Method</b>	>95%, Protein G purified
<b>Isotype</b>	IgG
<b>Clonality</b>	Polyclonal
<b>Alias</b>	Histone-lysine N-methyltransferase, H3 lysine-79 specific (EC 2.1.1.43) (DOT1-like protein) (Histone H3-K79 methyltransferase) (H3-K79-HMTase) (Lysine N-methyltransferase 4), DOT1L, KIAA1814 KMT4
<b>Immunogen Species</b>	Homo sapiens (Human)
<b>Research Area</b>	Epigenetics and Nuclear Signaling
<b>Target Names</b>	DOT1L

## Image



### Western Blot

Positive WB detected in: HepG2 whole cell lysate, A549 whole cell lysate

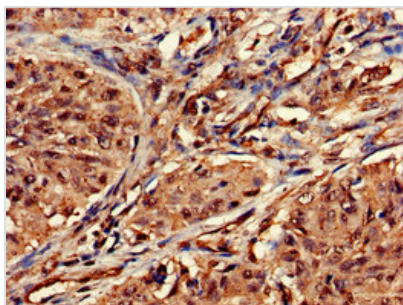
All lanes: DOT1L antibody at 3µg/ml

### Secondary

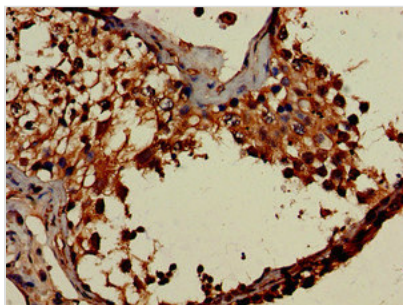
Goat polyclonal to rabbit IgG at 1/50000 dilution

Predicted band size: 185, 165 kDa

Observed band size: 185 kDa



Immunohistochemistry of paraffin-embedded human lung cancer using CSB-PA848418LA01HU at dilution of 1:100



Immunohistochemistry of paraffin-embedded human testis tissue using CSB-PA848418LA01HU at dilution of 1:100