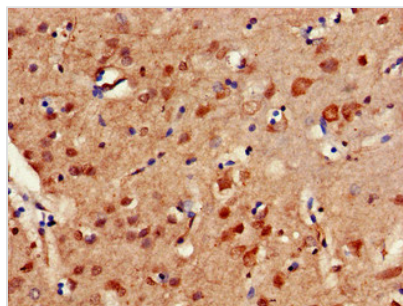




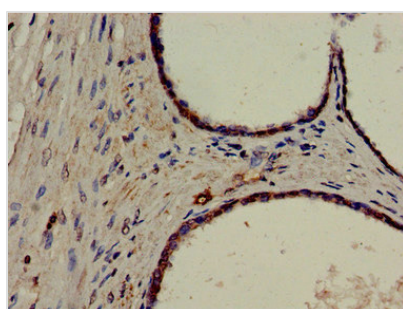
ERCC4 Antibody

| | |
|----------------------------|--|
| Product Code | CSB-PA849795HA01HU |
| Storage | Upon receipt, store at -20°C or -80°C. Avoid repeated freeze. |
| Uniprot No. | Q92889 |
| Immunogen | Recombinant Human DNA repair endonuclease XPF protein (656-753AA) |
| Raised In | Rabbit |
| Species Reactivity | Human |
| Tested Applications | ELISA, IHC, IF; Recommended dilution: IHC:1:20-1:200, IF:1:50-1:200 |
| Form | Liquid |
| Conjugate | Non-conjugated |
| Storage Buffer | Preservative: 0.03% Proclin 300 Constituents: 50% Glycerol, 0.01M PBS, pH 7.4 |
| Purification Method | >95%, Protein G purified |
| Isotype | IgG |
| Clonality | Polyclonal |
| Alias | DNA repair endonuclease XPF (EC 3.1.-.-) (DNA excision repair protein ERCC-4) (DNA repair protein complementing XP-F cells) (Xeroderma pigmentosum group F-complementing protein), ERCC4, ERCC11 XPF |
| Immunogen Species | Homo sapiens (Human) |
| Research Area | Epigenetics and Nuclear Signaling |
| Target Names | ERCC4 |

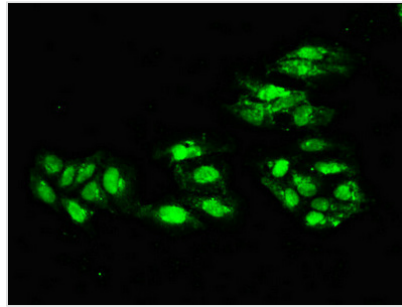
Image



Immunohistochemistry of paraffin-embedded human brain tissue using CSB-PA849795HA01HU at dilution of 1:100



Immunohistochemistry of paraffin-embedded human prostate cancer using CSB-PA849795HA01HU at dilution of 1:100



Immunofluorescent analysis of HeLa cells using CSB-PA849795HA01HU at dilution of 1:100 and Alexa Fluor 488-conjugated AffiniPure Goat Anti-Rabbit IgG(H+L)

Usage

For Research Use Only. Not for use in diagnostic or therapeutic procedures.