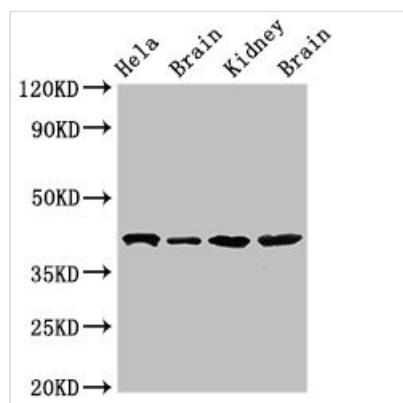




ATAD1 Antibody

| | |
|----------------------------|---|
| Product Code | CSB-PA850855LA01HU |
| Storage | Upon receipt, store at -20°C or -80°C. Avoid repeated freeze. |
| Uniprot No. | Q8NBU5 |
| Immunogen | Recombinant Human ATPase family AAA domain-containing protein 1 protein (289-350AA) |
| Raised In | Rabbit |
| Species Reactivity | Human, Mouse, Rat |
| Tested Applications | ELISA, WB, IHC; Recommended dilution: WB:1:500-1:5000, IHC:1:20-1:200 |
| Form | Liquid |
| Conjugate | Non-conjugated |
| Storage Buffer | Preservative: 0.03% Proclin 300 Constituents: 50% Glycerol, 0.01M PBS, pH 7.4 |
| Purification Method | >95%, Protein G purified |
| Isotype | IgG |
| Clonality | Polyclonal |
| Alias | ATPase family AAA domain-containing protein 1 (EC 3.6.1.3) (Thorase), ATAD1 |
| Immunogen Species | Homo sapiens (Human) |
| Research Area | Others |
| Target Names | ATAD1 |

Image



Western Blot

Positive WB detected in: HeLa whole cell lysate, Rat brain tissue, Mouse kidney tissue, Mouse brain tissue

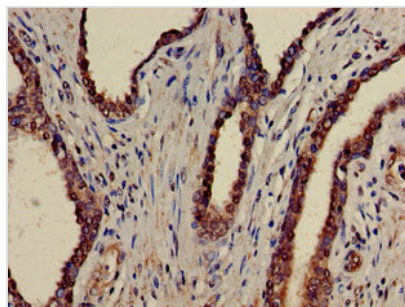
All lanes: ATAD1 antibody at 4µg/ml

Secondary

Goat polyclonal to rabbit IgG at 1/50000 dilution

Predicted band size: 41, 33 kDa

Observed band size: 41 kDa



Immunohistochemistry of paraffin-embedded human prostate cancer using CSB-PA850855LA01HU at dilution of 1:100

Usage

For Research Use Only. Not for use in diagnostic or therapeutic procedures.