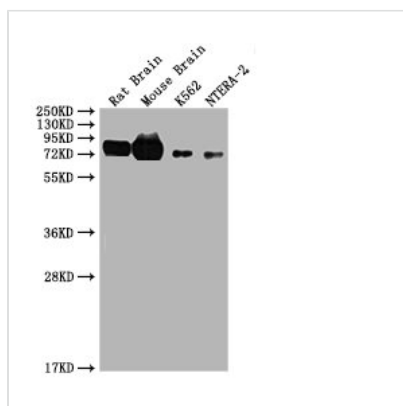




# WASF1 Antibody

<b>Product Code</b>	CSB-PA852883LA01HU
<b>Storage</b>	Upon receipt, store at -20°C or -80°C. Avoid repeated freeze.
<b>Uniprot No.</b>	Q92558
<b>Immunogen</b>	Recombinant Human Wiskott-Aldrich syndrome protein family member 1 protein (381-553AA)
<b>Raised In</b>	Rabbit
<b>Species Reactivity</b>	Human, Mouse, Rat
<b>Tested Applications</b>	ELISA, WB, IHC; Recommended dilution: WB:1:500-1:5000, IHC:1:20-1:200
<b>Form</b>	Liquid
<b>Conjugate</b>	Non-conjugated
<b>Storage Buffer</b>	Preservative: 0.03% Proclin 300 Constituents: 50% Glycerol, 0.01M PBS, pH 7.4
<b>Purification Method</b>	>95%, Protein G purified
<b>Isotype</b>	IgG
<b>Clonality</b>	Polyclonal
<b>Alias</b>	Wiskott-Aldrich syndrome protein family member 1 (WASP family protein member 1) (Protein WAVE-1) (Verprolin homology domain-containing protein 1), WASF1, KIAA0269 SCAR1 WAVE1
<b>Immunogen Species</b>	Homo sapiens (Human)
<b>Research Area</b>	Signal Transduction
<b>Target Names</b>	WASF1

## Image



### Western Blot

Positive WB detected in: Rat brain tissue, Mouse brain tissue, K562, NTERA-2

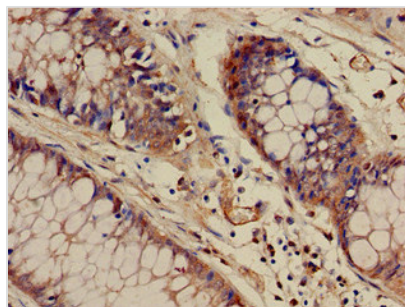
All lanes: WASF1 antibody at 1.5µg/ml

### Secondary

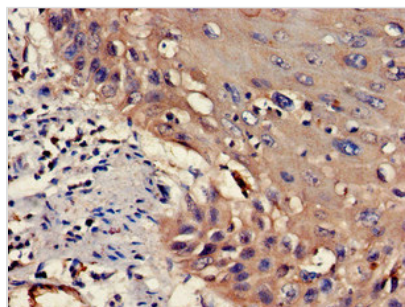
Goat polyclonal to rabbit IgG at 1/50000 dilution

Predicted band size: 80 kDa

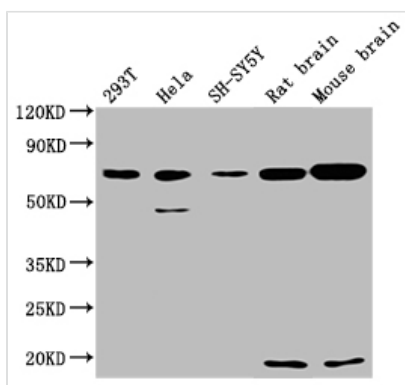
Observed band size: 62 kDa



Immunohistochemistry of paraffin-embedded human colon cancer using CSB-PA852883LA01HU at dilution of 1:100



Immunohistochemistry of paraffin-embedded human cervical cancer using CSB-PA852883LA01HU at dilution of 1:100



**Western Blot**

Positive WB detected in: 293T whole cell lysate, HeLa whole cell lysate, SH-SY5Y whole cell lysate, Rat Brain tissue, Mouse Brain tissue  
 All lanes: WASF1 antibody at 1:2000  
 Secondary  
 Goat polyclonal to rabbit IgG at 1/50000 dilution  
 Predicted band size: 62 kDa  
 Observed band size: 72 kDa

**Usage**

For Research Use Only. Not for use in diagnostic or therapeutic procedures.