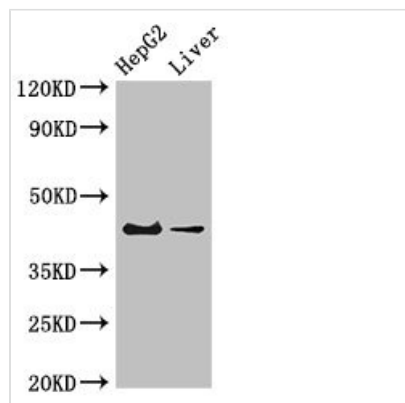




GPER1 Antibody

Product Code	CSB-PA859933LA01HU
Storage	Upon receipt, store at -20°C or -80°C. Avoid repeated freeze.
Uniprot No.	Q99527
Immunogen	Recombinant Human G-protein coupled estrogen receptor 1 protein (1-62AA)
Raised In	Rabbit
Species Reactivity	Human, Mouse
Tested Applications	ELISA, WB, IHC, IF; Recommended dilution: WB:1:500-1:5000, IHC:1:20-1:200, IF:1:50-1:200
Form	Liquid
Conjugate	Non-conjugated
Storage Buffer	Preservative: 0.03% Proclin 300 Constituents: 50% Glycerol, 0.01M PBS, pH 7.4
Purification Method	>95%, Protein G purified
Isotype	IgG
Clonality	Polyclonal
Alias	G-protein coupled estrogen receptor 1 (Chemoattractant receptor-like 2) (Flow-induced endothelial G-protein coupled receptor 1) (FEG-1) (G protein-coupled estrogen receptor 1) (G-protein coupled receptor 30) (GPCR-Br) (IL8-related receptor DRY12) (Lymphocyte-derived G-protein coupled receptor) (LYGPR) (Membrane estrogen receptor) (mER), GPER1, CEPR CMKRL2 DRY12 GPER GPR30
Immunogen Species	Homo sapiens (Human)
Research Area	Neuroscience
Target Names	GPER1

Image



Western Blot

Positive WB detected in: HepG2 whole cell lysate, Mouse liver tissue

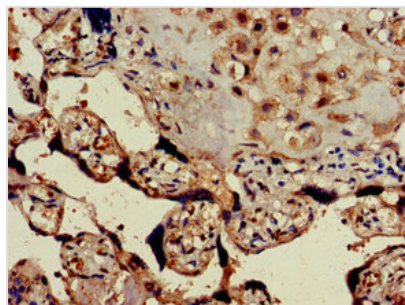
All lanes: GPER1 antibody at 4µg/ml

Secondary

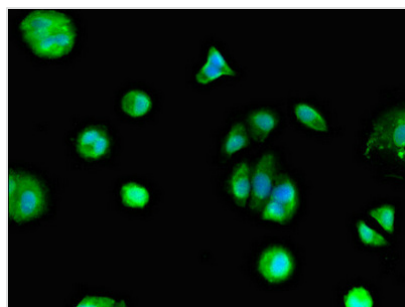
Goat polyclonal to rabbit IgG at 1/50000 dilution

Predicted band size: 43 kDa

Observed band size: 43 kDa



Immunohistochemistry of paraffin-embedded human placenta tissue using CSB-PA859933LA01HU at dilution of 1:100



Immunofluorescent analysis of MCF-7 cells using CSB-PA859933LA01HU at dilution of 1:100 and Alexa Fluor 488-conjugated AffiniPure Goat Anti-Rabbit IgG(H+L)

Usage

For Research Use Only. Not for use in diagnostic or therapeutic procedures.