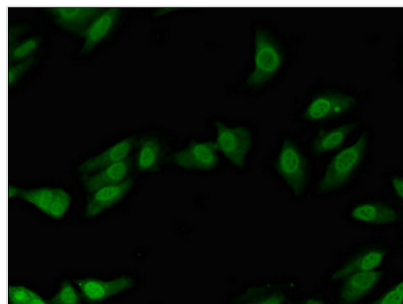




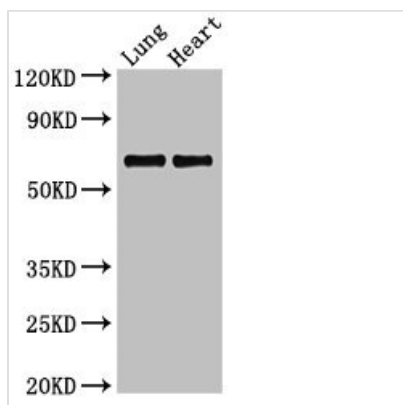
POLL Antibody

Product Code	CSB-PA871513LA01HU
Storage	Upon receipt, store at -20°C or -80°C. Avoid repeated freeze.
Uniprot No.	Q9UGP5
Immunogen	Recombinant Human DNA polymerase lambda protein (16-211AA)
Raised In	Rabbit
Species Reactivity	Human, Rat
Tested Applications	ELISA, WB, IF; Recommended dilution: WB:1:200-1:2000, IF:1:50-1:200
Form	Liquid
Conjugate	Non-conjugated
Storage Buffer	Preservative: 0.03% Proclin 300 Constituents: 50% Glycerol, 0.01M PBS, pH 7.4
Purification Method	>95%, Protein G purified
Isotype	IgG
Clonality	Polyclonal
Alias	DNA polymerase lambda (Pol Lambda) (EC 2.7.7.7) (EC 4.2.99.-) (DNA polymerase beta-2) (Pol beta2) (DNA polymerase kappa), POLL
Immunogen Species	Homo sapiens (Human)
Research Area	Epigenetics and Nuclear Signaling
Target Names	POLL

Image



Immunofluorescent analysis of HeLa cells using CSB-PA871513LA01HU at dilution of 1:100 and Alexa Fluor 488-conjugated AffiniPure Goat Anti-Rabbit IgG(H+L)



Western Blot

Positive WB detected in: Rat lung tissue, Rat heart tissue

All lanes: POLL antibody at 2.4μg/ml

Secondary

Goat polyclonal to rabbit IgG at 1/50000 dilution

Predicted band size: 64, 34 kDa

Observed band size: 64 kDa