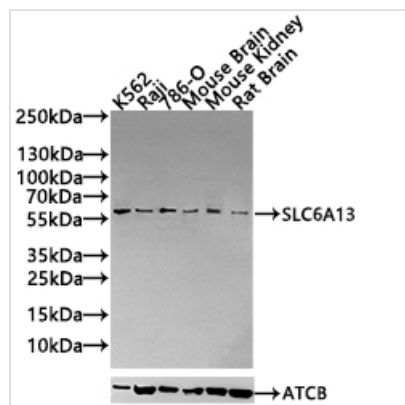




SLC6A13 Antibody

Product Code	CSB-PA889104LA01HU
Storage	Upon receipt, store at -20°C or -80°C. Avoid repeated freeze.
Uniprot No.	Q9NSD5
Immunogen	Recombinant Human Sodium- and chloride-dependent GABA transporter 2 protein
Raised In	Rabbit
Species Reactivity	Human, Mouse, Rat
Tested Applications	ELISA, WB,IF; Recommended dilution: WB:1:500-1:5000, IF:1:20-1:200
Form	Liquid
Storage Buffer	Liquid in PBS containing 50% glycerol, 0.5% BSA and 0.02% sodium azid
Purification Method	Antigen affinity purification
Isotype	IgG
Clonality	Polyclonal
Product Type	Polyclonal Antibody
Immunogen Species	Homo sapiens (Human)
Research Area	Others
Target Names	SLC6A13

Image

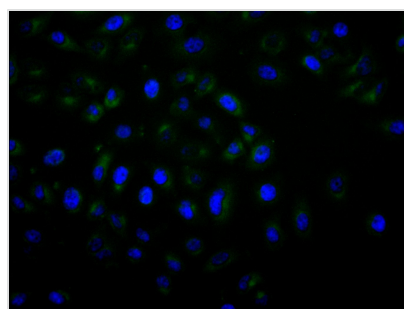


Western Blot

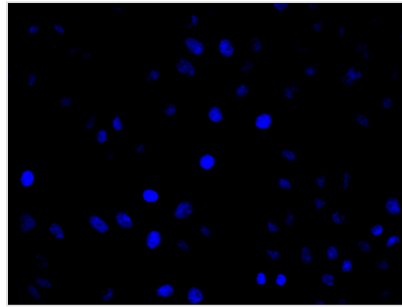
Positive WB detected in: K562 whole cell lysate(30µg), Raji whole cell lysate(30µg), 786-O whole cell lysate(30µg), Mouse Brain tissue lysate(20µg), Mouse Kidney tissue lysate(20µg), Rat Brain tissue lysate(20µg)
All lanes: SLC6A13 antibody at 1:1000

Secondary

Goat polyclonal to rabbit IgG at 1/20000 dilution
Predicted band size: 69,58,11 kDa
Observed band size: 58 kDa
Exposure time: 120s



Immunofluorescence staining of HeLa cell with CSB-PA889104LA01HU at 1:30, counter-stained with DAPI. The cells were fixed in 4% formaldehyde and blocked in 10% normal Goat Serum. The cells were then incubated with the antibody overnight at 4C. The secondary antibody was Alexa Fluor 488-conjugated AffiniPure Goat Anti-Rabbit IgG(H+L).



Immunofluorescence staining of HeLa cell with 5% goat serum, counter-stained with DAPI. The cells were fixed in 4% formaldehyde and blocked in 10% normal Goat Serum. The cells were then incubated with the antibody overnight at 4C. The secondary antibody was Alexa Fluor 488-conjugated AffiniPure Goat Anti-Rabbit IgG(H+L).

Usage

For Research Use Only. Not for use in diagnostic or therapeutic procedures.