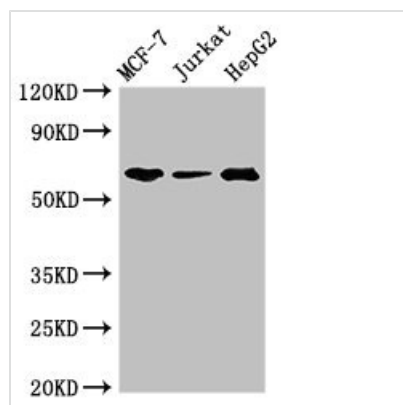




SHOC2 Antibody

Product Code	CSB-PA891468LA01HU
Storage	Upon receipt, store at -20°C or -80°C. Avoid repeated freeze.
Uniprot No.	Q9UQ13
Immunogen	Recombinant Human Leucine-rich repeat protein SHOC-2 protein (3-89AA)
Raised In	Rabbit
Species Reactivity	Human
Tested Applications	ELISA, WB, IHC, IF; Recommended dilution: WB:1:500-1:5000, IHC:1:20-1:200, IF:1:50-1:200
Form	Liquid
Conjugate	Non-conjugated
Storage Buffer	Preservative: 0.03% Proclin 300 Constituents: 50% Glycerol, 0.01M PBS, pH 7.4
Purification Method	>95%, Protein G purified
Isotype	IgG
Clonality	Polyclonal
Alias	Leucine-rich repeat protein SHOC-2 (Protein soc-2 homolog) (Protein sur-8 homolog), SHOC2, KIAA0862
Immunogen Species	Homo sapiens (Human)
Research Area	Cell Biology
Target Names	SHOC2

Image



Western Blot

Positive WB detected in: MCF-7 whole cell lysate, Jurkat whole cell lysate, HepG2 whole cell lysate

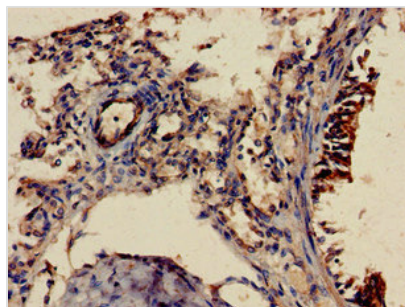
All lanes: SHOC2 antibody at 3µg/ml

Secondary

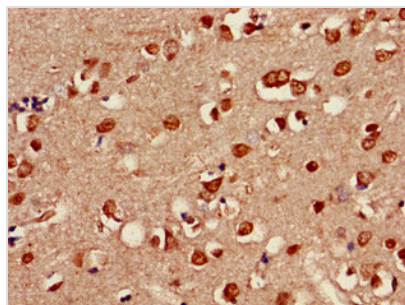
Goat polyclonal to rabbit IgG at 1/50000 dilution

Predicted band size: 65, 60 kDa

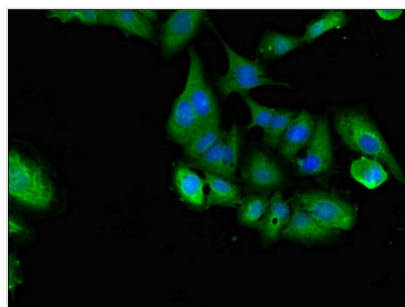
Observed band size: 65 kDa



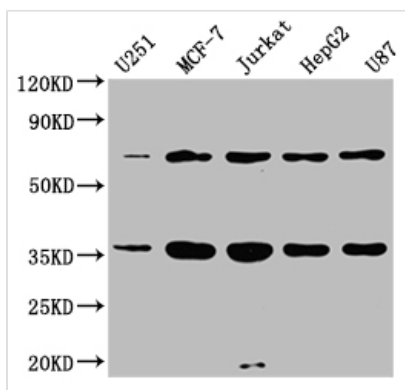
Immunohistochemistry of paraffin-embedded human lung tissue using CSB-PA891468LA01HU at dilution of 1:100



Immunohistochemistry of paraffin-embedded human brain tissue using CSB-PA891468LA01HU at dilution of 1:100



Immunofluorescent analysis of HeLa cells using CSB-PA891468LA01HU at dilution of 1:100 and Alexa Fluor 488-conjugated AffiniPure Goat Anti-Rabbit IgG(H+L)



Western Blot

Positive WB detected in: U251 whole cell lysate, MCF-7 whole cell lysate, Jurkat whole cell lysate, HepG2 whole cell lysate, U87 whole cell lysate
 All lanes: SHOC2 antibody at 1:2000
 Secondary
 Goat polyclonal to rabbit IgG at 1/50000 dilution
 Predicted band size: 65, 60 kDa
 Observed band size: 65 kDa

Usage

For Research Use Only. Not for use in diagnostic or therapeutic procedures.