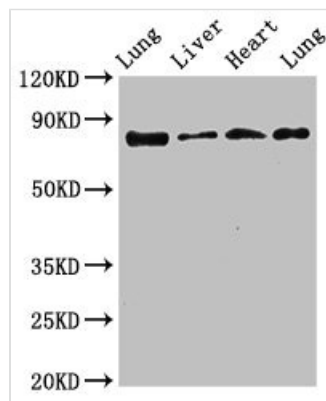




# LOXL2 Antibody

<b>Product Code</b>	CSB-PA897283LA01HU
<b>Storage</b>	Upon receipt, store at -20°C or -80°C. Avoid repeated freeze.
<b>Uniprot No.</b>	Q9Y4K0
<b>Immunogen</b>	Recombinant Human Lysyl oxidase homolog 2 protein (27-121AA)
<b>Raised In</b>	Rabbit
<b>Species Reactivity</b>	Human, Mouse, Rat
<b>Tested Applications</b>	ELISA, WB, IHC; Recommended dilution: WB:1:500-1:5000, IHC:1:20-1:200
<b>Form</b>	Liquid
<b>Conjugate</b>	Non-conjugated
<b>Storage Buffer</b>	Preservative: 0.03% Proclin 300 Constituents: 50% Glycerol, 0.01M PBS, pH 7.4
<b>Purification Method</b>	>95%, Protein G purified
<b>Isotype</b>	IgG
<b>Clonality</b>	Polyclonal
<b>Alias</b>	Lysyl oxidase homolog 2 (EC 1.4.3.13) (Lysyl oxidase-like protein 2) (Lysyl oxidase-related protein 2) (Lysyl oxidase-related protein WS9-14), LOXL2
<b>Immunogen Species</b>	Homo sapiens (Human)
<b>Research Area</b>	Signal Transduction
<b>Target Names</b>	LOXL2

## Image



### Western Blot

Positive WB detected in: Rat lung tissue, Rat liver tissue, Mouse heart tissue, Mouse lung tissue

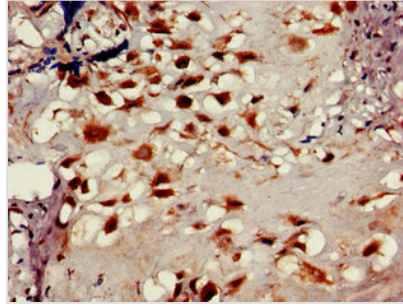
All lanes: LOXL2 antibody at 3.5µg/ml

Secondary

Goat polyclonal to rabbit IgG at 1/50000 dilution

Predicted band size: 87 kDa

Observed band size: 87 kDa



Immunohistochemistry of paraffin-embedded human placenta tissue using CSB-PA897283LA01HU at dilution of 1:100

---

**Usage**

For Research Use Only. Not for use in diagnostic or therapeutic procedures.