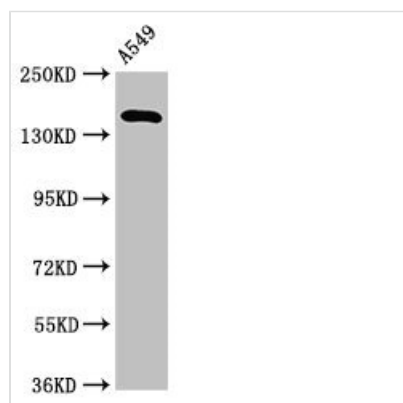




A2ML1 Antibody

Product Code	CSB-PA001005LA01HU
Storage	Upon receipt, store at -20°C or -80°C. Avoid repeated freeze.
Uniprot No.	A8K2U0
Immunogen	Recombinant Human Alpha-2-macroglobulin-like protein 1 protein (625-751AA)
Raised In	Rabbit
Species Reactivity	Human
Tested Applications	ELISA, WB, IHC; Recommended dilution: WB:1:500-1:5000, IHC:1:20-1:200
Form	Liquid
Conjugate	Non-conjugated
Storage Buffer	Preservative: 0.03% Proclin 300 Constituents: 50% Glycerol, 0.01M PBS, pH 7.4
Purification Method	>95%, Protein G purified
Isotype	IgG
Clonality	Polyclonal
Alias	Alpha-2-macroglobulin-like protein 1 (C3 and PZP-like alpha-2-macroglobulin domain-containing protein 9), A2ML1, CPAMD9
Immunogen Species	Homo sapiens (Human)
Research Area	Immunology
Target Names	A2ML1

Image



Western Blot

Positive WB detected in: A549 whole cell lysate

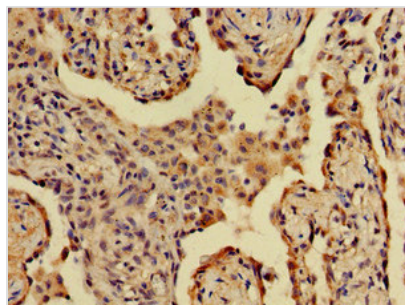
All lanes: A2ML1 antibody at 3.2µg/ml

Secondary

Goat polyclonal to rabbit IgG at 1/50000 dilution

Predicted band size: 162, 106 kDa

Observed band size: 162 kDa



Immunohistochemistry of paraffin-embedded human lung cancer using CSB-PA001005LA01HU at dilution of 1:100

Usage

For Research Use Only. Not for use in diagnostic or therapeutic procedures.