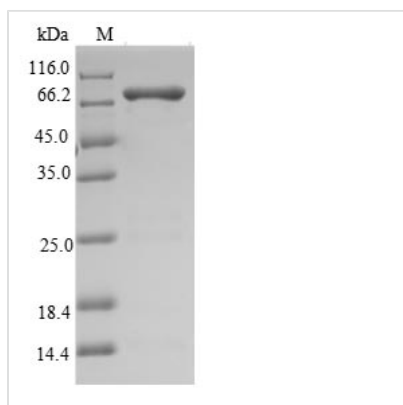




Recombinant *Synechocystis* sp. Ribonuclease J (rnj)

Product Code	CSB-EP344938SSQ(A4)
Relevance	An RNase that has 5'-3' exonuclease and possibly endonuclease activity. Involved in maturation of rRNA and in some organisms also mRNA maturation and/or decay
Abbreviation	Recombinant <i>Synechocystis</i> sp. rnj protein
Storage	The shelf life is related to many factors, storage state, buffer ingredients, storage temperature and the stability of the protein itself. Generally, the shelf life of liquid form is 6 months at -20°C/-80°C. The shelf life of lyophilized form is 12 months at -20°C/-80°C.
Uniprot No.	P54123
Product Type	Recombinant Protein
Immunogen Species	<i>Synechocystis</i> sp. (strain PCC 6803 / Kazusa)
Purity	Greater than 90% as determined by SDS-PAGE.
Sequence	<p>MAKNTQTQALKILPLGGLHEIGKNTCVFEYDDEILLDDAGLAFPTDDMHGTVNVV LPDMTYLRENREKIKGMVVTHGHEDHIGGIAYHLKQFDIPIIYGPRLAMALLRDK LEEAGMLERTNLQTVSPREMVRLGKSFVVEFIRNTHSIADSYCLAHTPLGVVM HSGDFKIDHTPIDGEFFDLQKVAEYGEKGVLCCLSDSTNAEVPGITPSEASVIPN LDRVFSQAEGRLMVTTFASSVHRVNIILSLAQKHQRKVAVVGRSMLNVIAHAR KLGVIKCPDNLFVPLKAARNLPDQQQLILTTGSQGEPLAAMTRISNGEHPQIKIR QGDTVVFSANPIPGNTIAVVNTIDRLMMQGANVIYGKHQGIHVSGHASQEEHK MLLALTRPKFFVPVHGEHRMLVKHSQMAQAQGIPSENVIVNNGDVIELTGDR RVAGQVPSGIELVDQAGIVHESTMAERQQMAEDGLVTVAALSKTGTLAYPE VHCRGVVMTIQPKLLEELIVRTIENFLTERWSEFTHGNSNGSTEVSWNALQKELE SSLQRLIKRELQSSPMVLLMLQTDTPIELDQVPQNVSTVSATSATPAPRKKVVL TKTPEPKVKAKPEKKVVTAEPSAQPVSTTKVYRRSRKRSTTSVSS</p>
Research Area	others
Source	E.coli
Target Names	rnj
Expression Region	1-640aa
Notes	Repeated freezing and thawing is not recommended. Store working aliquots at 4°C for up to one week.
Tag Info	N-terminal 6xHis-SUMO-tagged
Mol. Weight	86.4kDa
Protein Length	Full Length
Image	



(Tris-Glycine gel) Discontinuous SDS-PAGE (reduced) with 5% enrichment gel and 15% separation gel.

Reconstitution

We recommend that this vial be briefly centrifuged prior to opening to bring the contents to the bottom. Please reconstitute protein in deionized sterile water to a concentration of 0.1-1.0 mg/mL. We recommend to add 5-50% of glycerol (final concentration) and aliquot for long-term storage at $-20^{\circ}\text{C}/-80^{\circ}\text{C}$. Our default final concentration of glycerol is 50%. Customers could use it as reference.

Shelf Life

The shelf life is related to many factors, storage state, buffer ingredients, storage temperature and the stability of the protein itself. Generally, the shelf life of liquid form is 6 months at $-20^{\circ}\text{C}/-80^{\circ}\text{C}$. The shelf life of lyophilized form is 12 months at $-20^{\circ}\text{C}/-80^{\circ}\text{C}$.