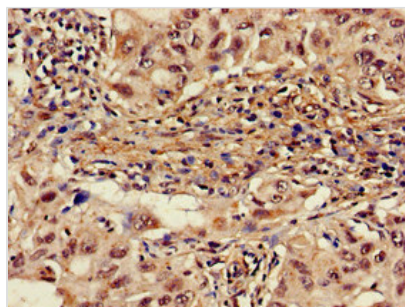




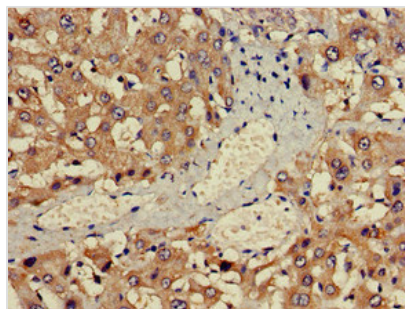
# ALAS1 Antibody

<b>Product Code</b>	CSB-PA001559LA01HU
<b>Storage</b>	Upon receipt, store at -20°C or -80°C. Avoid repeated freeze.
<b>Uniprot No.</b>	P13196
<b>Immunogen</b>	Recombinant Human 5-aminolevulinate synthase, nonspecific, mitochondrial protein (57-285AA)
<b>Raised In</b>	Rabbit
<b>Species Reactivity</b>	Human
<b>Tested Applications</b>	ELISA, IHC; Recommended dilution: IHC:1:20-1:200
<b>Form</b>	Liquid
<b>Conjugate</b>	Non-conjugated
<b>Storage Buffer</b>	Preservative: 0.03% Proclin 300 Constituents: 50% Glycerol, 0.01M PBS, pH 7.4
<b>Purification Method</b>	>95%, Protein G purified
<b>Isotype</b>	IgG
<b>Clonality</b>	Polyclonal
<b>Alias</b>	5-aminolevulinate synthase, nonspecific, mitochondrial (ALAS-H) (EC 2.3.1.37) (5-aminolevulinic acid synthase 1) (Delta-ALA synthase 1) (Delta-aminolevulinate synthase 1), ALAS1, ALAS3 ALASH
<b>Immunogen Species</b>	Homo sapiens (Human)
<b>Research Area</b>	Cardiovascular
<b>Target Names</b>	ALAS1

## Image



Immunohistochemistry of paraffin-embedded human lung cancer using CSB-PA001559LA01HU at dilution of 1:100



Immunohistochemistry of paraffin-embedded human liver cancer using CSB-PA001559LA01HU at dilution of 1:100

---

**Usage**

For Research Use Only. Not for use in diagnostic or therapeutic procedures.