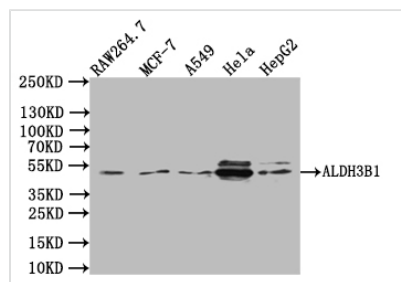




ALDH3B1 Antibody

Product Code	CSB-PA001574LA01HU
Storage	Upon receipt, store at -20°C or -80°C. Avoid repeated freeze.
Uniprot No.	P43353
Immunogen	Recombinant Human Aldehyde dehydrogenase family 3 member B1 protein
Raised In	Rabbit
Species Reactivity	Human, Mouse
Tested Applications	ELISA, WB, IHC; Recommended dilution: WB:1:1000-1:2000, IHC:1:20-1:200
Form	Liquid
Storage Buffer	Preservative:0.02% sodium azide Constituents: PBS containing 50% glycerol pH 7.3
Purification Method	Antigen affinity purification
Isotype	IgG
Clonality	Polyclonal
Product Type	Polyclonal Antibody
Immunogen Species	Homo sapiens (Human)
Research Area	Signal Transduction
Target Names	ALDH3B1

Image



Western Blot

Positive WB detected in: RAW264.7 whole cell lysate, MCF7 whole cell lysate, A549 whole cell lysate, HeLa whole cell lysate, HepG2 whole cell lysate

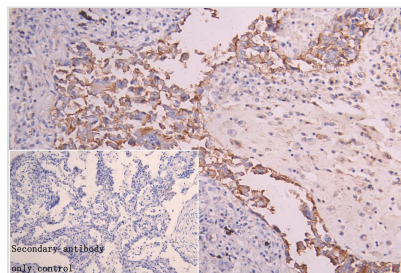
All lanes:ALDH3B1 Antibody at 1:1000

Secondary

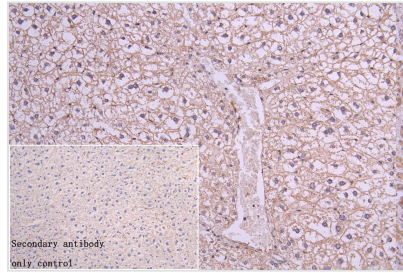
Goat polyclonal to rabbit IgG at 1/50000 dilution

Predicted band size: 52 kDa

Observed band size: 52 kDa



IHC image of CSB-PA001574LA01HU diluted at 1:50 and staining in paraffin-embedded human Lung cancer performed on a Leica Bond™ system. After dewaxing and hydration, antigen retrieval was mediated by high pressure in a citrate buffer (pH 6.0). Section was blocked with 10% normal goat serum 30min at RT. Then primary antibody (1% BSA) was incubated at 4°C overnight. The primary is detected by a Goat anti-rabbit polymer IgG labeled by HRP and visualized using 0.05% DAB. Secondary antibody only control: uses 1% BSA instead of primary antibody



IHC image of CSB-PA001574LA01HU diluted at 1:150 and staining in paraffin-embedded mouse liver tissue performed on a Leica Bond™ system. After dewaxing and hydration, antigen retrieval was mediated by high pressure in a citrate buffer (pH 6.0). Section was blocked with 10% normal goat serum 30min at RT. Then primary antibody (1% BSA) was incubated at 4°C overnight. The primary is detected by a Goat anti-rabbit polymer IgG labeled by HRP and visualized using 0.05% DAB. Secondary antibody only control: uses 1% BSA instead of primary antibody

Usage

For Research Use Only. Not for use in diagnostic or therapeutic procedures.