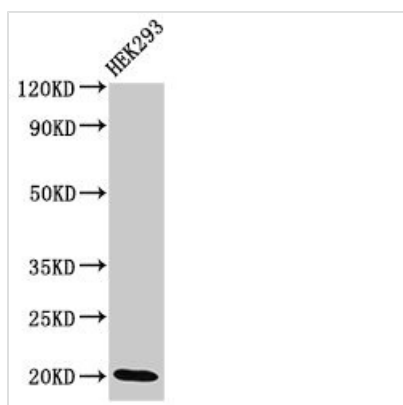




DLX6 Antibody

Product Code	CSB-PA006957LA01HU
Storage	Upon receipt, store at -20°C or -80°C. Avoid repeated freeze.
Uniprot No.	P56179
Immunogen	Recombinant Human Homeobox protein DLX-6 protein (110-171AA)
Raised In	Rabbit
Species Reactivity	Human
Tested Applications	ELISA, WB; Recommended dilution: WB:1:500-1:2000
Form	Liquid
Conjugate	Non-conjugated
Storage Buffer	Preservative: 0.03% Proclin 300 Constituents: 50% Glycerol, 0.01M PBS, pH 7.4
Purification Method	>95%, Protein G purified
Isotype	IgG
Clonality	Polyclonal
Alias	Homeobox protein DLX-6, DLX6
Immunogen Species	Homo sapiens (Human)
Research Area	Epigenetics and Nuclear Signaling
Target Names	DLX6

Image



Western Blot

Positive WB detected in: HEK293 whole cell lysate

All lanes: DLX6 antibody at 3.4µg/ml

Secondary

Goat polyclonal to rabbit IgG at 1/50000 dilution

Predicted band size: 20, 30, 33 kDa

Observed band size: 20 kDa

Usage

For Research Use Only. Not for use in diagnostic or therapeutic procedures.