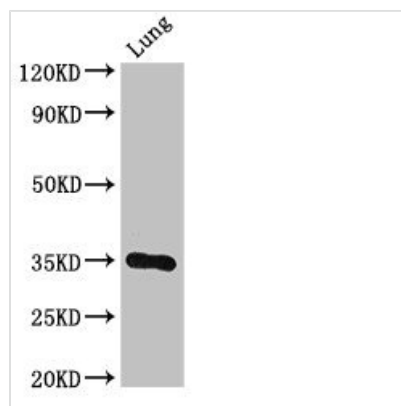




DPM1 Antibody

Product Code	CSB-PA007134LA01HU
Storage	Upon receipt, store at -20°C or -80°C. Avoid repeated freeze.
Uniprot No.	O60762
Immunogen	Recombinant Human Dolichol-phosphate mannosyltransferase subunit 1 protein (2-260AA)
Raised In	Rabbit
Species Reactivity	Human, Mouse
Tested Applications	ELISA, WB, IHC, IF; Recommended dilution: WB:1:500-1:5000, IHC:1:20-1:200, IF:1:50-1:200
Form	Liquid
Conjugate	Non-conjugated
Storage Buffer	Preservative: 0.03% Proclin 300 Constituents: 50% Glycerol, 0.01M PBS, pH 7.4
Purification Method	>95%, Protein G purified
Isotype	IgG
Clonality	Polyclonal
Alias	Dolichol-phosphate mannosyltransferase subunit 1 (EC 2.4.1.83) (Dolichol-phosphate mannose synthase subunit 1) (DPM synthase subunit 1) (Dolichyl-phosphate beta-D-mannosyltransferase subunit 1) (Mannose-P-dolichol synthase subunit 1) (MPD synthase subunit 1), DPM1
Immunogen Species	Homo sapiens (Human)
Research Area	Tags & Cell Markers
Target Names	DPM1

Image



Western Blot

Positive WB detected in: Mouse lung tissue

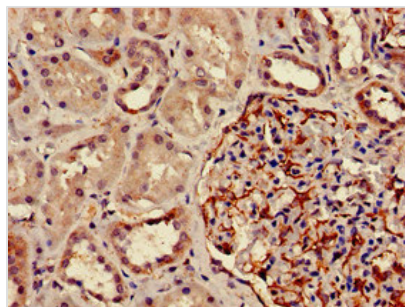
All lanes: DPM1 antibody at 3μg/ml

Secondary

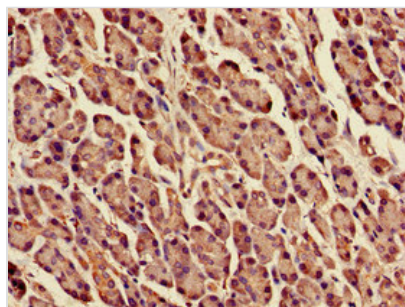
Goat polyclonal to rabbit IgG at 1/50000 dilution

Predicted band size: 30 kDa

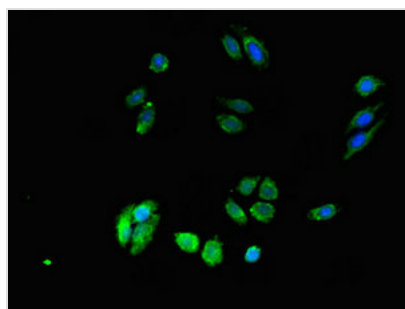
Observed band size: 30 kDa



Immunohistochemistry of paraffin-embedded human kidney tissue using CSB-PA007134LA01HU at dilution of 1:100



Immunohistochemistry of paraffin-embedded human pancreatic tissue using CSB-PA007134LA01HU at dilution of 1:100



Immunofluorescent analysis of HepG2 cells using CSB-PA007134LA01HU at dilution of 1:100 and Alexa Fluor 488-conjugated AffiniPure Goat Anti-Rabbit IgG(H+L)