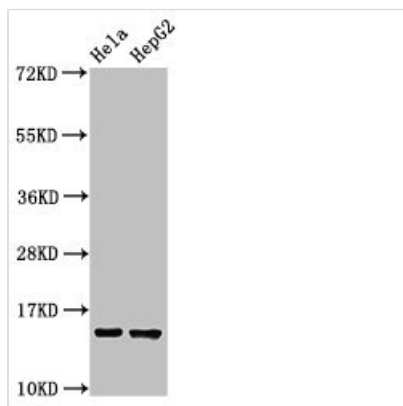




# IFITM3 Antibody

<b>Product Code</b>	CSB-PA011026LA01HU
<b>Storage</b>	Upon receipt, store at -20°C or -80°C. Avoid repeated freeze.
<b>Uniprot No.</b>	Q01628
<b>Immunogen</b>	Recombinant Human Interferon-induced transmembrane protein 3 protein (1-57AA)
<b>Raised In</b>	Rabbit
<b>Species Reactivity</b>	Human
<b>Tested Applications</b>	ELISA, WB, IHC, IP; Recommended dilution: WB:1:500-1:5000, IHC:1:20-1:200, IP:1:200-1:2000
<b>Form</b>	Liquid
<b>Conjugate</b>	Non-conjugated
<b>Storage Buffer</b>	Preservative: 0.03% Proclin 300 Constituents: 50% Glycerol, 0.01M PBS, pH 7.4
<b>Purification Method</b>	>95%, Protein G purified
<b>Isotype</b>	IgG
<b>Clonality</b>	Polyclonal
<b>Alias</b>	Interferon-induced transmembrane protein 3 (Dispanin subfamily A member 2b) (DSPA2b) (Interferon-inducible protein 1-8U), IFITM3
<b>Immunogen Species</b>	Homo sapiens (Human)
<b>Research Area</b>	Stem Cells
<b>Target Names</b>	IFITM3

## Image



### Western Blot

Positive WB detected in: HeLa whole cell lysate, HepG2 whole cell lysate

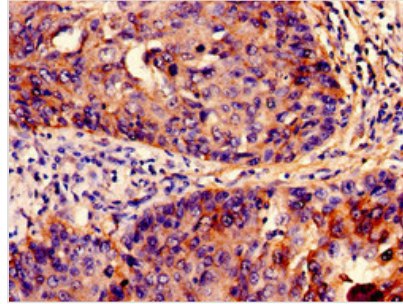
All lanes: IFITM3 antibody at 2.5µg/ml

Secondary

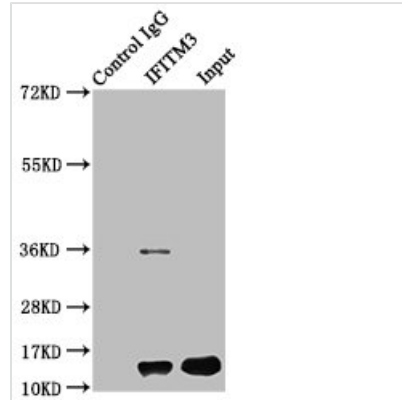
Goat polyclonal to rabbit IgG at 1/50000 dilution

Predicted band size: 15 kDa

Observed band size: 15 kDa



Immunohistochemistry analysis of human cervical cancer using CSB-PA011026LA01HU at dilution of 1:100



Immunoprecipitating IFITM3 in HepG2 whole cell lysate

Lane 1: Rabbit control IgG instead of CSB-PA011026LA01HU in HepG2 whole cell lysate. For western blotting, a HRP-conjugated Protein G antibody was used as the secondary antibody (1/2000)

Lane 2: CSB-PA011026LA01HU (6 $\mu$ g) + HepG2 whole cell lysate (500 $\mu$ g)

Lane 3: HepG2 whole cell lysate (20 $\mu$ g)

## Usage

For Research Use Only. Not for use in diagnostic or therapeutic procedures.