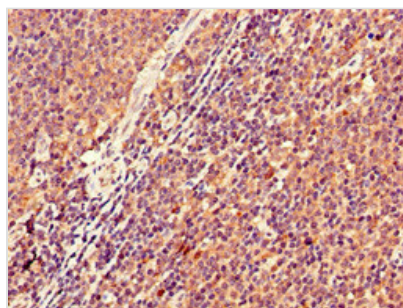




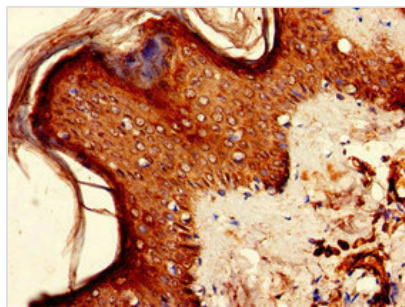
KIR2DS2 Antibody

| | |
|----------------------------|--|
| Product Code | CSB-PA012360LA01HU |
| Storage | Upon receipt, store at -20°C or -80°C. Avoid repeated freeze. |
| Uniprot No. | P43631 |
| Immunogen | Recombinant Human Killer cell immunoglobulin-like receptor 2DS2 protein (104-241AA) |
| Raised In | Rabbit |
| Species Reactivity | Human |
| Tested Applications | ELISA, IHC, IF; Recommended dilution: IHC:1:20-1:200, IF:1:50-1:200 |
| Form | Liquid |
| Conjugate | Non-conjugated |
| Storage Buffer | Preservative: 0.03% Proclin 300 Constituents: 50% Glycerol, 0.01M PBS, pH 7.4 |
| Purification Method | >95%, Protein G purified |
| Isotype | IgG |
| Clonality | Polyclonal |
| Alias | Killer cell immunoglobulin-like receptor 2DS2 (CD158 antigen-like family member J) (MHC class I NK cell receptor) (NK receptor 183 Act1) (Natural killer-associated transcript 5) (NKAT-5) (p58 natural killer cell receptor clone CL-49) (p58 NK receptor CL-49) (CD antigen CD158j), KIR2DS2, CD158J NKAT5 |
| Immunogen Species | Homo sapiens (Human) |
| Research Area | Immunology |
| Target Names | KIR2DS2 |

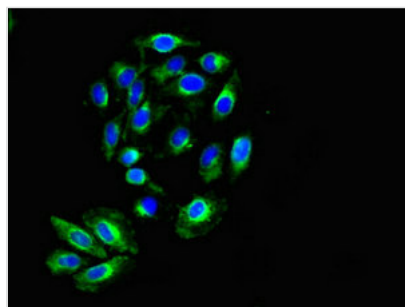
Image



Immunohistochemistry of paraffin-embedded human lymph node tissue using CSB-PA012360LA01HU at dilution of 1:100



Immunohistochemistry of paraffin-embedded human skin tissue using CSB-PA012360LA01HU at dilution of 1:100



Immunofluorescent analysis of A549 cells using CSB-PA012360LA01HU at dilution of 1:100 and Alexa Fluor 488-conjugated AffiniPure Goat Anti-Rabbit IgG(H+L)