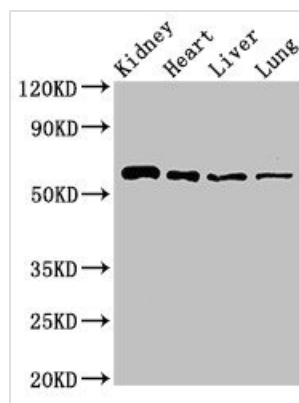




SLC22A2 Antibody

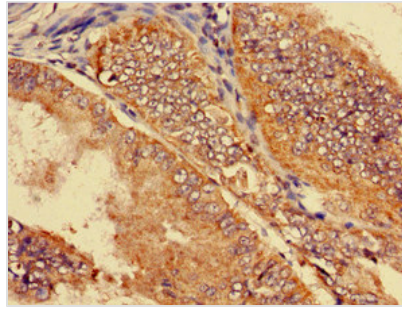
Product Code	CSB-PA021453LA01HU
Storage	Upon receipt, store at -20°C or -80°C. Avoid repeated freeze.
Uniprot No.	O15244
Immunogen	Recombinant Human Solute carrier family 22 member 2 protein (48-135AA)
Raised In	Rabbit
Species Reactivity	Human, Mouse, Rat
Tested Applications	ELISA, WB, IHC, IF; Recommended dilution: WB:1:500-1:5000, IHC:1:20-1:200, IF:1:50-1:200
Form	Liquid
Conjugate	Non-conjugated
Storage Buffer	Preservative: 0.03% Proclin 300 Constituents: 50% Glycerol, 0.01M PBS, pH 7.4
Purification Method	>95%, Protein G purified
Isotype	IgG
Clonality	Polyclonal
Alias	Solute carrier family 22 member 2 (Organic cation transporter 2) (hOCT2), SLC22A2, OCT2
Immunogen Species	Homo sapiens (Human)
Research Area	Signal Transduction
Target Names	SLC22A2

Image

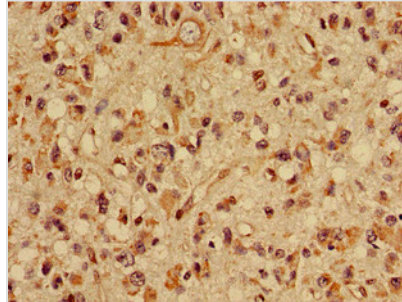


Western Blot

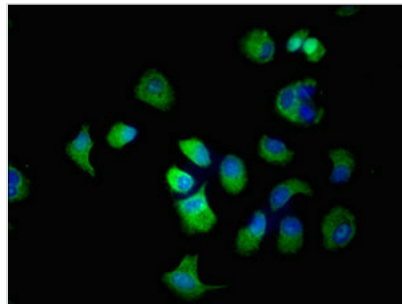
Positive WB detected in: Mouse kidney tissue, Rat heart tissue, Rat liver tissue, Rat lung tissue
All lanes: SLC22A2 antibody at 2.7µg/ml
Secondary
Goat polyclonal to rabbit IgG at 1/50000 dilution
Predicted band size: 63, 55, 27 kDa
Observed band size: 63 kDa



Immunohistochemistry of paraffin-embedded human endometrial cancer using CSB-PA021453LA01HU at dilution of 1:100



Immunohistochemistry of paraffin-embedded human glioma using CSB-PA021453LA01HU at dilution of 1:100



Immunofluorescent analysis of MCF-7 cells using CSB-PA021453LA01HU at dilution of 1:100 and Alexa Fluor 488-conjugated AffiniPure Goat Anti-Rabbit IgG(H+L)