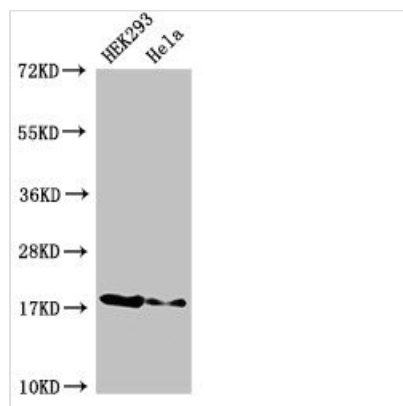




RNASEH2C Antibody

Product Code	CSB-PA837441LA01HU
Storage	Upon receipt, store at -20°C or -80°C. Avoid repeated freeze.
Uniprot No.	Q8TDP1
Immunogen	Recombinant Human Ribonuclease H2 subunit C protein (1-164AA)
Raised In	Rabbit
Species Reactivity	Human
Tested Applications	ELISA, WB, IHC, IF; Recommended dilution: WB:1:500-1:5000, IHC:1:20-1:200, IF:1:50-1:200
Form	Liquid
Conjugate	Non-conjugated
Storage Buffer	Preservative: 0.03% Proclin 300 Constituents: 50% Glycerol, 0.01M PBS, pH 7.4
Purification Method	>95%, Protein G purified
Isotype	IgG
Clonality	Polyclonal
Alias	Ribonuclease H2 subunit C (RNase H2 subunit C) (Aicardi-Goutieres syndrome 3 protein) (AGS3) (RNase H1 small subunit) (Ribonuclease H1 subunit C), RNASEH2C, AYP1
Immunogen Species	Homo sapiens (Human)
Research Area	Epigenetics and Nuclear Signaling
Target Names	RNASEH2C

Image



Western Blot

Positive WB detected in: HEK293 whole cell lysate, HeLa whole cell lysate

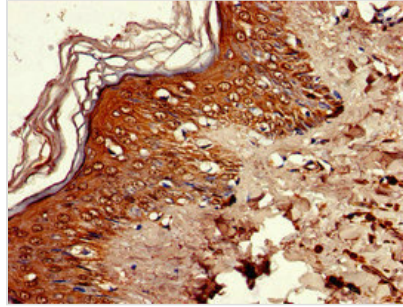
All lanes: RNASEH2C antibody at 3µg/ml

Secondary

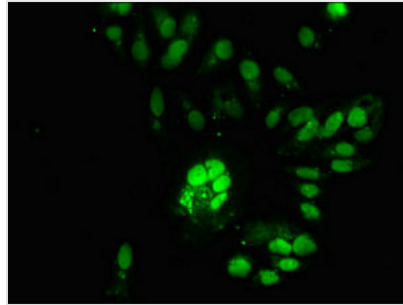
Goat polyclonal to rabbit IgG at 1/50000 dilution

Predicted band size: 18 kDa

Observed band size: 18 kDa



Immunohistochemistry of paraffin-embedded human skin tissue using CSB-PA837441LA01HU at dilution of 1:100



Immunofluorescent analysis of HeLa cells using CSB-PA837441LA01HU at dilution of 1:100 and Alexa Fluor 488-conjugated AffiniPure Goat Anti-Rabbit IgG(H+L)

Usage

For Research Use Only. Not for use in diagnostic or therapeutic procedures.