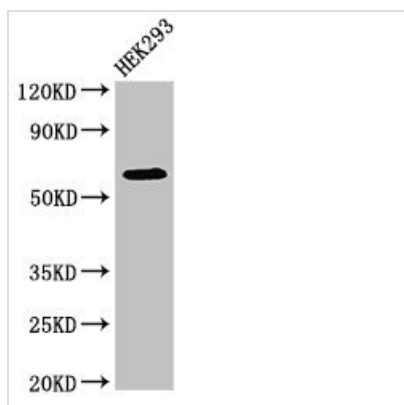




DEPDC1B Antibody

Product Code	CSB-PA851968LA01HU
Storage	Upon receipt, store at -20°C or -80°C. Avoid repeated freeze.
Uniprot No.	Q8WUY9
Immunogen	Recombinant Human DEP domain-containing protein 1B protein (343-529AA)
Raised In	Rabbit
Species Reactivity	Human
Tested Applications	ELISA, WB, IHC, IF; Recommended dilution: WB:1:500-1:5000, IHC:1:20-1:200, IF:1:50-1:200
Form	Liquid
Conjugate	Non-conjugated
Storage Buffer	Preservative: 0.03% Proclin 300 Constituents: 50% Glycerol, 0.01M PBS, pH 7.4
Purification Method	>95%, Protein G purified
Isotype	IgG
Clonality	Polyclonal
Alias	DEP domain-containing protein 1B (HBV X-transactivated gene 8 protein) (HBV XAg-transactivated protein 8), DEPDC1B, XTP8
Immunogen Species	Homo sapiens (Human)
Research Area	Signal Transduction
Target Names	DEPDC1B

Image



Western Blot

Positive WB detected in: HEK293 whole cell lysate

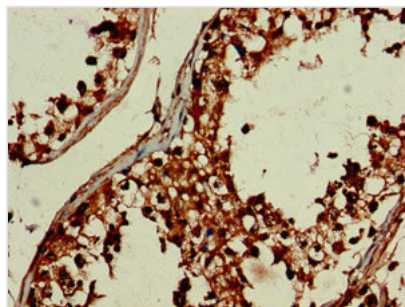
All lanes: DEPDC1B antibody at 4µg/ml

Secondary

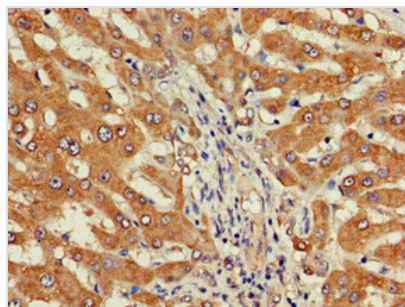
Goat polyclonal to rabbit IgG at 1/50000 dilution

Predicted band size: 62, 55 kDa

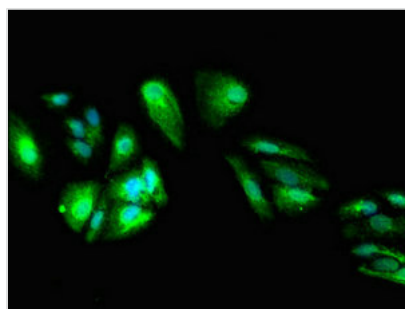
Observed band size: 62 kDa



Immunohistochemistry of paraffin-embedded human testis tissue using CSB-PA851968LA01HU at dilution of 1:100



Immunohistochemistry of paraffin-embedded human liver cancer using CSB-PA851968LA01HU at dilution of 1:100



Immunofluorescent analysis of HepG2 cells using CSB-PA851968LA01HU at dilution of 1:100 and Alexa Fluor 488-conjugated AffiniPure Goat Anti-Rabbit IgG(H+L)

Usage

For Research Use Only. Not for use in diagnostic or therapeutic procedures.