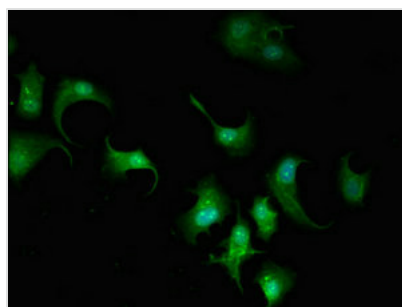




ARPC5L Antibody

Product Code	CSB-PA861078LA01HU
Storage	Upon receipt, store at -20°C or -80°C. Avoid repeated freeze.
Uniprot No.	Q9BPX5
Immunogen	Recombinant Human Actin-related protein 2/3 complex subunit 5-like protein (15-124AA)
Raised In	Rabbit
Species Reactivity	Human
Tested Applications	ELISA, IF; Recommended dilution: IF:1:50-1:200
Form	Liquid
Conjugate	Non-conjugated
Storage Buffer	Preservative: 0.03% Proclin 300 Constituents: 50% Glycerol, 0.01M PBS, pH 7.4
Purification Method	>95%, Protein G purified
Isotype	IgG
Clonality	Polyclonal
Alias	Actin-related protein 2/3 complex subunit 5-like protein (Arp2/3 complex 16 kDa subunit 2) (ARC16-2), ARPC5L
Immunogen Species	Homo sapiens (Human)
Research Area	Signal Transduction
Target Names	ARPC5L

Image



Immunofluorescent analysis of MCF-7 cells using CSB-PA861078LA01HU at dilution of 1:100 and Alexa Fluor 488-conjugated AffiniPure Goat Anti-Rabbit IgG(H+L)