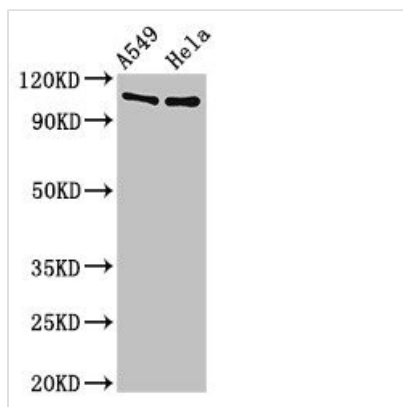




EML4 Antibody

Product Code	CSB-PA862066LA01HU
Storage	Upon receipt, store at -20°C or -80°C. Avoid repeated freeze.
Uniprot No.	Q96HE3
Immunogen	Recombinant Human EML4 protein (1-62AA)
Raised In	Rabbit
Species Reactivity	Human
Tested Applications	ELISA, WB; Recommended dilution: WB:1:500-1:5000
Form	Liquid
Conjugate	Non-conjugated
Storage Buffer	Preservative: 0.03% Proclin 300 Constituents: 50% Glycerol, 0.01M PBS, pH 7.4
Purification Method	>95%, Protein G purified
Isotype	IgG
Clonality	Polyclonal
Alias	Echinoderm microtubule-associated protein-like 4 (EMAP-4) (Restrictedly overexpressed proliferation-associated protein) (Ropp 120), EML4, C2orf2 EMAPL4
Immunogen Species	Homo sapiens (Human)
Research Area	Tags & Cell Markers
Target Names	EML4

Image



Western Blot

Positive WB detected in: A549 whole cell lysate, HeLa whole cell lysate

All lanes: EML4 antibody at 3µg/ml

Secondary

Goat polyclonal to rabbit IgG at 1/50000 dilution

Predicted band size: 109, 103 kDa

Observed band size: 109 kDa

Usage

For Research Use Only. Not for use in diagnostic or therapeutic procedures.