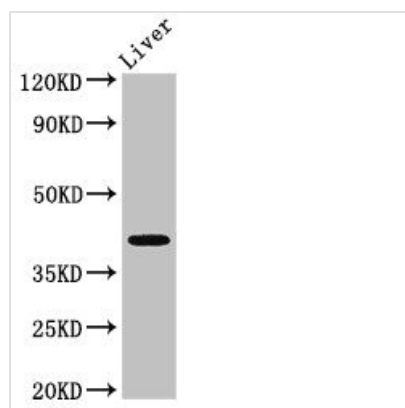




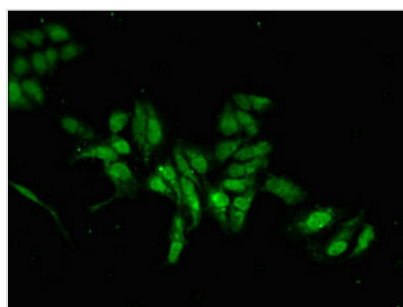
MAB21L2 Antibody

Product Code	CSB-PA896901LA01HU
Storage	Upon receipt, store at -20°C or -80°C. Avoid repeated freeze.
Uniprot No.	Q9Y586
Immunogen	Recombinant Human Protein mab-21-like 2 protein (1-300AA)
Raised In	Rabbit
Species Reactivity	Human, Mouse
Tested Applications	ELISA, WB, IF; Recommended dilution: WB:1:500-1:5000, IF:1:50-1:200
Form	Liquid
Conjugate	Non-conjugated
Storage Buffer	Preservative: 0.03% Proclin 300 Constituents: 50% Glycerol, 0.01M PBS, pH 7.4
Purification Method	>95%, Protein G purified
Isotype	IgG
Clonality	Polyclonal
Alias	Protein mab-21-like 2, MAB21L2
Immunogen Species	Homo sapiens (Human)
Research Area	Signal Transduction
Target Names	MAB21L2

Image



Western Blot
Positive WB detected in: Mouse liver tissue
All lanes: MAB21L2 antibody at 3μg/ml
Secondary
Goat polyclonal to rabbit IgG at 1/50000 dilution
Predicted band size: 41 kDa
Observed band size: 41 kDa



Immunofluorescent analysis of HeLa cells using CSB-PA896901LA01HU at dilution of 1:100 and Alexa Fluor 488-conjugated AffiniPure Goat Anti-Rabbit IgG(H+L)

