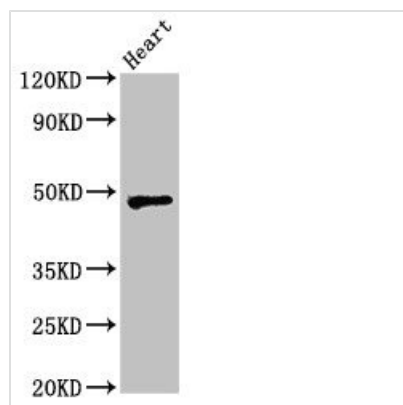




# WSB1 Antibody

|                            |  |
|----------------------------|--|
| <b>Product Code</b>        | CSB-PA897589LA01HU   |
| <b>Storage</b>             | Upon receipt, store at -20°C or -80°C. Avoid repeated freeze.  |
| <b>Uniprot No.</b>         | Q9Y6I7   |
| <b>Immunogen</b>           | Recombinant Human WD repeat and SOCS box-containing protein 1 protein (201-421AA)                        |
| <b>Raised In</b>           | Rabbit   |
| <b>Species Reactivity</b>  | Human, Rat   |
| <b>Tested Applications</b> | ELISA, WB, IHC; Recommended dilution: WB:1:500-1:5000, IHC:1:20-1:200                                    |
| <b>Form</b>                | Liquid   |
| <b>Conjugate</b>           | Non-conjugated   |
| <b>Storage Buffer</b>      | Preservative: 0.03% Proclin 300<br>Constituents: 50% Glycerol, 0.01M PBS, pH 7.4                         |
| <b>Purification Method</b> | >95%, Protein G purified   |
| <b>Isotype</b>             | IgG  |
| <b>Clonality</b>           | Polyclonal   |
| <b>Alias</b>               | WD repeat and SOCS box-containing protein 1 (WSB-1) (SOCS box-containing WD protein SWiP-1), WSB1, SWIP1 |
| <b>Immunogen Species</b>   | Homo sapiens (Human)   |
| <b>Research Area</b>       | Epigenetics and Nuclear Signaling  |
| <b>Target Names</b>        | WSB1   |

## Image



### Western Blot

Positive WB detected in: Rat heart tissue

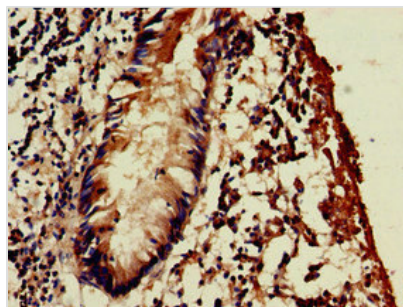
All lanes: WSB1 antibody at 2.5µg/ml

Secondary

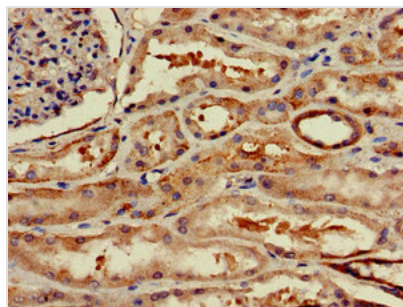
Goat polyclonal to rabbit IgG at 1/50000 dilution

Predicted band size: 48, 31, 28, 25 kDa

Observed band size: 48 kDa



Immunohistochemistry of paraffin-embedded human appendix tissue using CSB-PA897589LA01HU at dilution of 1:100



Immunohistochemistry of paraffin-embedded human kidney tissue using CSB-PA897589LA01HU at dilution of 1:100

## Usage

For Research Use Only. Not for use in diagnostic or therapeutic procedures.