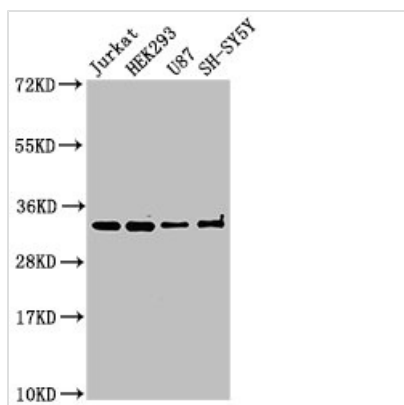




# CAMLG Antibody

<b>Product Code</b>	CSB-PA004475LA01HU
<b>Storage</b>	Upon receipt, store at -20°C or -80°C. Avoid repeated freeze.
<b>Uniprot No.</b>	P49069
<b>Immunogen</b>	Recombinant Human Calcium signal-modulating cyclophilin ligand protein (1-189AA)
<b>Raised In</b>	Rabbit
<b>Species Reactivity</b>	Human
<b>Tested Applications</b>	ELISA, WB, IF, IP; Recommended dilution: WB:1:500-1:5000, IF:1:50-1:500, IP:1:200-1:2000
<b>Form</b>	Liquid
<b>Conjugate</b>	Non-conjugated
<b>Storage Buffer</b>	Preservative: 0.03% Proclin 300 Constituents: 50% Glycerol, 0.01M PBS, pH 7.4
<b>Purification Method</b>	>95%, Protein G purified
<b>Isotype</b>	IgG
<b>Clonality</b>	Polyclonal
<b>Alias</b>	Calcium signal-modulating cyclophilin ligand (CAML), CAMLG, CAML
<b>Immunogen Species</b>	Homo sapiens (Human)
<b>Research Area</b>	Signal Transduction
<b>Target Names</b>	CAMLG

## Image



### Western Blot

Positive WB detected in: Jurkat whole cell lysate, HEK293 whole cell lysate, U87 whole cell lysate, SH-SY5Y whole cell lysate

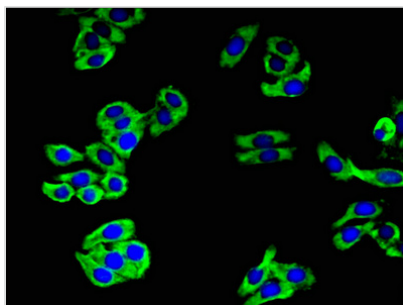
All lanes: CAMLG antibody at 3µg/ml

Secondary

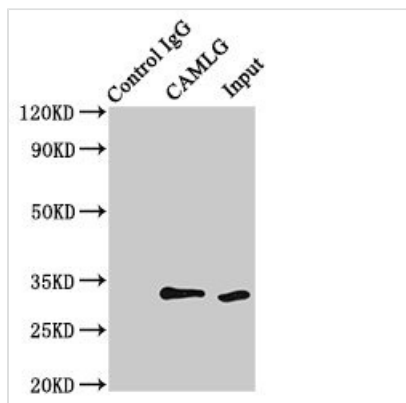
Goat polyclonal to rabbit IgG at 1/50000 dilution

Predicted band size: 33 kDa

Observed band size: 33 kDa



Immunofluorescent analysis of HepG2 cells using CSB-PA004475LA01HU at dilution of 1:100 and Alexa Fluor 488-conjugated AffiniPure Goat Anti-Rabbit IgG(H+L)



Immunoprecipitating CAMLG in HEK293 whole cell lysate  
 Lane 1: Rabbit control IgG (1 $\mu$ g) instead of CSB-PA004475LA01HU in HEK293 whole cell lysate. For western blotting, a HRP-conjugated Protein G antibody was used as the secondary antibody (1/2000)  
 Lane 2: CSB-PA004475LA01HU (8 $\mu$ g) + HEK293 whole cell lysate (500 $\mu$ g)  
 Lane 3: HEK293 whole cell lysate (10 $\mu$ g)

**Usage**

For Research Use Only. Not for use in diagnostic or therapeutic procedures.