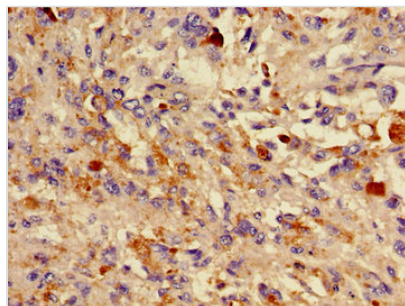




DCT Antibody

Product Code	CSB-PA006562LA01HU
Storage	Upon receipt, store at -20°C or -80°C. Avoid repeated freeze.
Uniprot No.	P40126
Immunogen	Recombinant Human L-dopachrome tautomerase protein (44-205AA)
Raised In	Rabbit
Species Reactivity	Human
Tested Applications	ELISA, IHC; Recommended dilution: IHC:1:20-1:200
Form	Liquid
Conjugate	Non-conjugated
Storage Buffer	Preservative: 0.03% Proclin 300 Constituents: 50% Glycerol, 0.01M PBS, pH 7.4
Purification Method	>95%, Protein G purified
Isotype	IgG
Clonality	Polyclonal
Alias	L-dopachrome tautomerase (DCT) (DT) (EC 5.3.3.12) (L-dopachrome Delta-isomerase) (Tyrosinase-related protein 2) (TRP-2) (TRP2), DCT, TYRP2
Immunogen Species	Homo sapiens (Human)
Research Area	Cell Biology
Target Names	DCT

Image



Immunohistochemistry of paraffin-embedded human melanoma using CSB-PA006562LA01HU at dilution of 1:100

Usage

For Research Use Only. Not for use in diagnostic or therapeutic procedures.