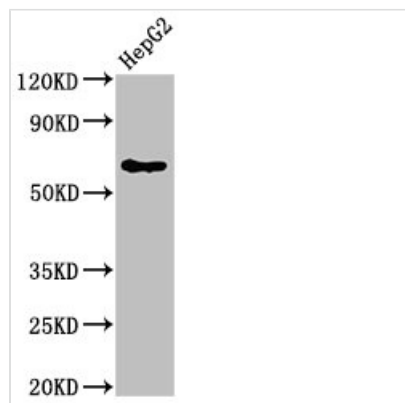




DLAT Antibody

Product Code	CSB-PA006926LA01HU
Storage	Upon receipt, store at -20°C or -80°C. Avoid repeated freeze.
Uniprot No.	P10515
Immunogen	Recombinant Human Dihydrolipoyllysine-residue acetyltransferase component of pyruvate dehydrogenase complex, mitochondrial protein (26-217AA)
Raised In	Rabbit
Species Reactivity	Human
Tested Applications	ELISA, WB, IP; Recommended dilution: WB:1:500-1:5000, IP:1:200-1:2000
Form	Liquid
Conjugate	Non-conjugated
Storage Buffer	Preservative: 0.03% Proclin 300 Constituents: 50% Glycerol, 0.01M PBS, pH 7.4
Purification Method	>95%, Protein G purified
Isotype	IgG
Clonality	Polyclonal
Alias	Dihydrolipoyllysine-residue acetyltransferase component of pyruvate dehydrogenase complex, mitochondrial (EC 2.3.1.12) (70 kDa mitochondrial autoantigen of primary biliary cirrhosis) (PBC) (Dihydrolipoamide acetyltransferase component of pyruvate dehydrogenase complex) (M2 antigen complex 70 kDa subunit) (Pyruvate dehydrogenase complex component E2) (PDC-E2) (PDCE2), DLAT, DLTA
Immunogen Species	Homo sapiens (Human)
Research Area	Signal Transduction
Target Names	DLAT

Image



Western Blot

Positive WB detected in: HepG2 whole cell lysate

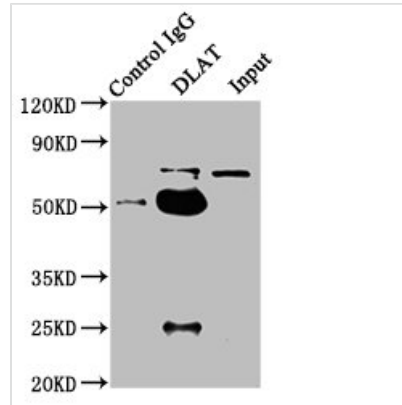
All lanes: DLAT antibody at 4µg/ml

Secondary

Goat polyclonal to rabbit IgG at 1/50000 dilution

Predicted band size: 69 kDa

Observed band size: 69 kDa



Immunoprecipitating DLAT in HepG2 whole cell lysate

Lane 1: Rabbit control IgG instead of CSB-PA006926LA01HU in HepG2 whole cell lysate. For western blotting, a HRP-conjugated Protein G antibody was used as the secondary antibody (1/2000)

Lane 2: CSB-PA006926LA01HU (6 μ g) + HepG2 whole cell lysate (1mg)

Lane 3: HepG2 whole cell lysate (20 μ g)

Usage

For Research Use Only. Not for use in diagnostic or therapeutic procedures.