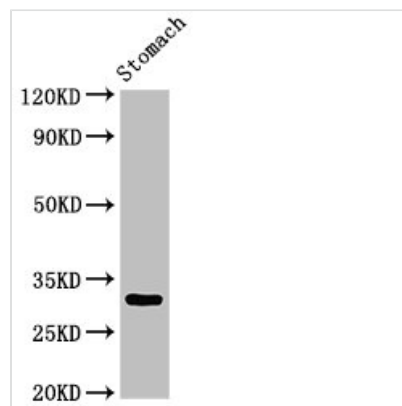




GCLM Antibody

Product Code	CSB-PA009322LA01HU
Storage	Upon receipt, store at -20°C or -80°C. Avoid repeated freeze.
Uniprot No.	P48507
Immunogen	Recombinant Human Glutamate--cysteine ligase regulatory subunit protein (1-274AA)
Raised In	Rabbit
Species Reactivity	Human, Rat
Tested Applications	ELISA, WB, IHC, IF; Recommended dilution: WB:1:500-1:5000, IHC:1:20-1:200, IF:1:50-1:200
Form	Liquid
Conjugate	Non-conjugated
Storage Buffer	Preservative: 0.03% Proclin 300 Constituents: 50% Glycerol, 0.01M PBS, pH 7.4
Purification Method	>95%, Protein G purified
Isotype	IgG
Clonality	Polyclonal
Alias	Glutamate--cysteine ligase regulatory subunit (GCS light chain) (Gamma-ECS regulatory subunit) (Gamma-glutamylcysteine synthetase regulatory subunit) (Glutamate--cysteine ligase modifier subunit), GCLM, GLCLR
Immunogen Species	Homo sapiens (Human)
Research Area	Neuroscience
Target Names	GCLM

Image



Western Blot

Positive WB detected in: Rat stomach tissue

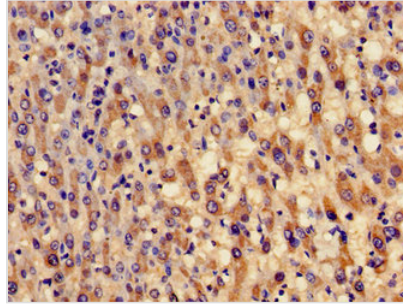
All lanes: GCLM antibody at 3µg/ml

Secondary

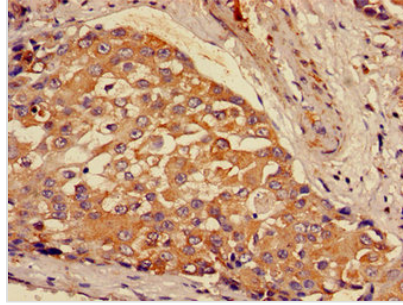
Goat polyclonal to rabbit IgG at 1/50000 dilution

Predicted band size: 31, 29 kDa

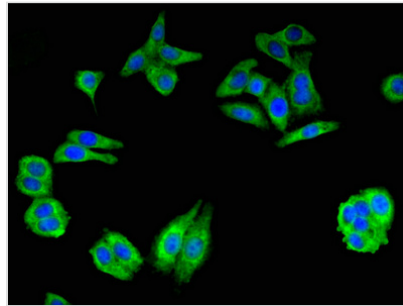
Observed band size: 31 kDa



Immunohistochemistry of paraffin-embedded human liver cancer using CSB-PA009322LA01HU at dilution of 1:100



Immunohistochemistry of paraffin-embedded human breast cancer using CSB-PA009322LA01HU at dilution of 1:100



Immunofluorescent analysis of HepG2 cells using CSB-PA009322LA01HU at dilution of 1:100 and Alexa Fluor 488-conjugated AffiniPure Goat Anti-Rabbit IgG(H+L)