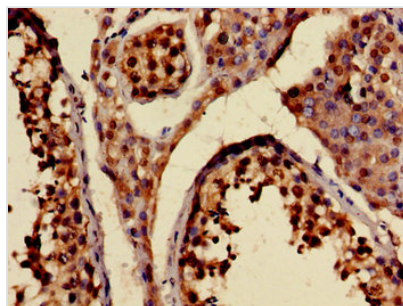




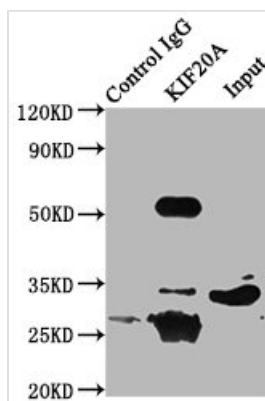
# KIF20A Antibody

<b>Product Code</b>	CSB-PA012321LA01HU
<b>Storage</b>	Upon receipt, store at -20°C or -80°C. Avoid repeated freeze.
<b>Uniprot No.</b>	O95235
<b>Immunogen</b>	Recombinant Human Kinesin-like protein KIF20A protein (161-294AA)
<b>Raised In</b>	Rabbit
<b>Species Reactivity</b>	Human
<b>Tested Applications</b>	ELISA, IHC, IP; Recommended dilution: IHC:1:50-1:200, IP:1:200-1:2000
<b>Form</b>	Liquid
<b>Conjugate</b>	Non-conjugated
<b>Storage Buffer</b>	Preservative: 0.03% Proclin 300 Constituents: 50% Glycerol, 0.01M PBS, pH 7.4
<b>Purification Method</b>	>95%, Protein G purified
<b>Isotype</b>	IgG
<b>Clonality</b>	Polyclonal
<b>Alias</b>	Kinesin-like protein KIF20A (GG10_2) (Mitotic kinesin-like protein 2) (MKlp2) (Rab6-interacting kinesin-like protein) (Rabkinesin-6), KIF20A, MKLP2, RAB6KIFL
<b>Immunogen Species</b>	Homo sapiens (Human)
<b>Research Area</b>	Cell Biology
<b>Target Names</b>	KIF20A

## Image



Immunohistochemistry of paraffin-embedded human testis tissue using CSB-PA012321LA01HU at dilution of 1:100



Immunoprecipitating KIF20A in 293 whole cell lysate

Lane 1: Rabbit control IgG (1 $\mu$ g) instead of CSB-PA012321LA01HU in 293 whole cell lysate. For western blotting, a HRP-conjugated Protein G antibody was used as the secondary antibody (1/2000)

Lane 2: CSB-PA012321LA01HU (6 $\mu$ g) + 293 whole cell lysate (500 $\mu$ g)

Lane 3: 293 whole cell lysate (10 $\mu$ g)