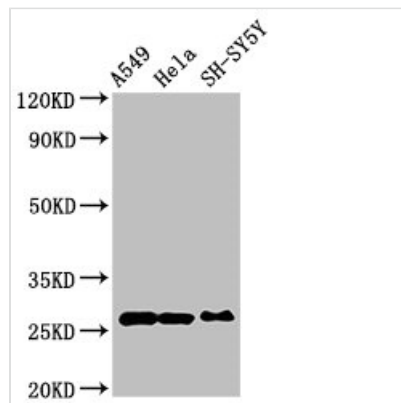




PRDX6 Antibody

Product Code	CSB-PA018659LA01HU
Storage	Upon receipt, store at -20°C or -80°C. Avoid repeated freeze.
Uniprot No.	P30041
Immunogen	Recombinant Human Peroxiredoxin-6 protein (87-224AA)
Raised In	Rabbit
Species Reactivity	Human
Tested Applications	ELISA, WB, IHC, IF, IP; Recommended dilution: WB:1:500-1:5000, IHC:1:20-1:200, IF:1:50-1:200, IP:1:200-1:2000
Form	Liquid
Conjugate	Non-conjugated
Storage Buffer	Preservative: 0.03% Proclin 300 Constituents: 50% Glycerol, 0.01M PBS, pH 7.4
Purification Method	>95%, Protein G purified
Isotype	IgG
Clonality	Polyclonal
Alias	Peroxiredoxin-6 (EC 1.11.1.15) (1-Cys peroxiredoxin) (1-Cys PRX) (24 kDa protein) (Acidic calcium-independent phospholipase A2) (aiPLA2) (EC 3.1.1.4) (Antioxidant protein 2) (Liver 2D page spot 40) (Non-selenium glutathione peroxidase) (NSGPx) (Red blood cells page spot 12), PRDX6, AOP2 KIAA0106
Immunogen Species	Homo sapiens (Human)
Research Area	Signal Transduction
Target Names	PRDX6

Image



Western Blot

Positive WB detected in: A549 whole cell lysate, HeLa whole cell lysate, SH-SY5Y whole cell lysate

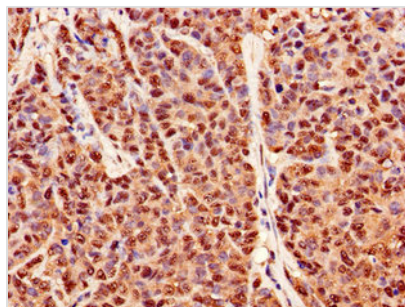
All lanes: PRDX6 antibody at 4µg/ml

Secondary

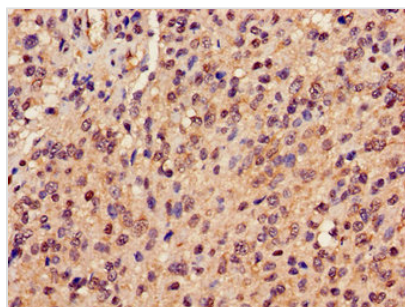
Goat polyclonal to rabbit IgG at 1/50000 dilution

Predicted band size: 26 kDa

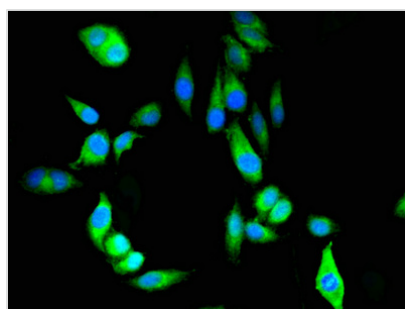
Observed band size: 26 kDa



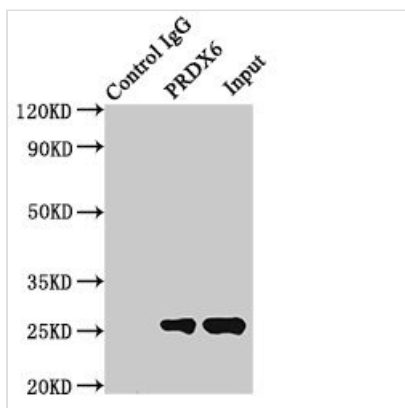
Immunohistochemistry of paraffin-embedded human ovarian cancer using CSB-PA018659LA01HU at dilution of 1:100



Immunohistochemistry of paraffin-embedded human glioma using CSB-PA018659LA01HU at dilution of 1:100



Immunofluorescent analysis of HeLa cells using CSB-PA018659LA01HU at dilution of 1:100 and Alexa Fluor 488-conjugated AffiniPure Goat Anti-Rabbit IgG(H+L)



Immunoprecipitating PRDX6 in HeLa whole cell lysate
 Lane 1: Rabbit control IgG (1 μ g) instead of CSB-PA018659LA01HU in HeLa whole cell lysate. For western blotting, a HRP-conjugated Protein G antibody was used as the secondary antibody (1/2000)
 Lane 2: CSB-PA018659LA01HU (8 μ g) + HeLa whole cell lysate (500 μ g)
 Lane 3: HeLa whole cell lysate (10 μ g)

Usage

For Research Use Only. Not for use in diagnostic or therapeutic procedures.